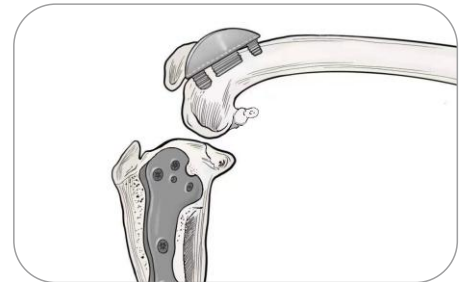
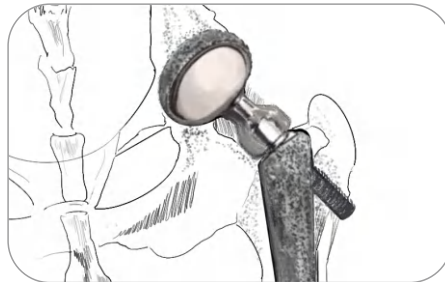
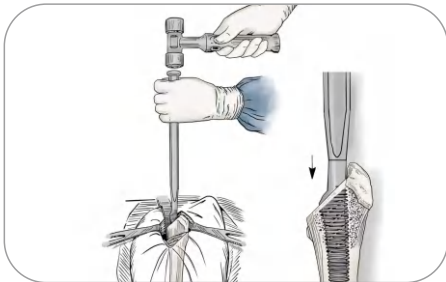


# BLUESAO® SMALL ANIMAL ORTHOPEDICS



## Product Catalog

# About BlueSAO


BlueSAO Co., Ltd. was established in September 2014, specializing in the research, development, production, and sales of orthopedic instruments for small animals. The company is dedicated to providing high-quality orthopedic surgical instruments and solutions for the animal healthcare industry, and its products have been widely used in veterinary clinics and animal hospitals around the world.



## Brand Meaning:

BLUESAO is the core brand of BlueSAO Co., Ltd. Its name and image embody profound concepts and values, reflecting the company's dedication and commitment to product quality, technological innovation, and animal healthcare industry.

- BLUE:** Which is one of the primary colors (blue, green) in a surgical operating room. It is also a homophone for "佰陆" in the company's Chinese name.
- SAO:** Small Animal Orthopedics. SAO directly points to the brand's core field, highlighting the company's focus and professionalism in this market segment.

 It represents a hip joint graphic, demonstrating that BlueSAO is a pioneer and innovator in the field of animal hip replacement in China, highlighting the company's professionalism and innovation in this area.

## The Development History of the Company's Hip Replacement System (THR) Products

- In September 2014, at the beginning of the company's establishment, it set up the first Chinese veterinary orthopedic training base invested by a private company.
- On November 19, 2019, it became the fourth company in the world and the first in China to launch bone cement THR system for animals.
- July 30, 2020, it was the first in China to launch biological THR system for animals.
- On November 27, 2023, it was the first in the world to launch the Bionic biological THR system for animals.
- On July 19, 2024, it was the first in the world to launch the Bionic bone cement THR system for animals.

## Market Position:

BlueSAO is the leader in small animal orthopedic instruments in China and in Chinese small animal orthopedics market share ranks among the top!

BlueSAO products have now been exported to over 68 countries and regions around the world, including the United Kingdom, the United States, and Russia. Distributors have also been established in dozens of countries such as the United Kingdom, the United States, Russia, Canada, and Mexico.

## Intellectual Property Rights:

The company holds over 80 trademarks and more than 50 patents. It has registered the BLUESAO international trademark in over 20 countries around the world and simultaneously applied for PCT international patents, bringing "Made in China" to the world!



New Factory



Orthopedic Training Base



Imported CNC

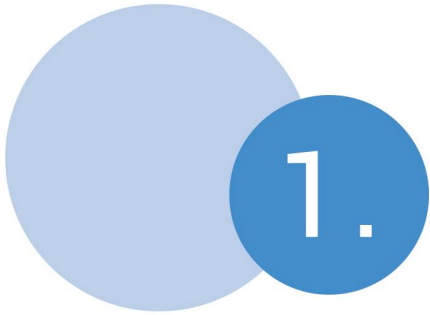


Factory Workshop



# Contents

|  |            |
|--|------------|
| <b>1. Total Hip Replacement System (THR)</b> .....                   | <b>04</b>  |
| • Biological - Bionic THR System .....                               | <b>05</b>  |
| • Biological - Dual Mobility THR System .....                        | <b>17</b>  |
| • Cemented - Micro and Nano Bionic THR System .....                  | <b>23</b>  |
| • THR General Instrument Set .....                                   | <b>29</b>  |
| • THR Ancillary Products .....                                       | <b>31</b>  |
| <b>2. Biological Patellar Groove Replacement System (Bio-PGR)</b> .. | <b>33</b>  |
| <b>3. TPLO Locking Plate System</b> .....                            | <b>38</b>  |
| • Clover - TPLO Locking Plate System .....                           | <b>39</b>  |
| • Cobra - TPLO Locking Plate System .....                            | <b>43</b>  |
| • Mini - TPLO Locking Plate System .....                             | <b>47</b>  |
| • TPLO Reduction Forceps .....                                       | <b>51</b>  |
| • JIG .....  | <b>52</b>  |
| <b>4. PRCL Locking Plate System</b> .....                            | <b>53</b>  |
| <b>5. LCP Bone Plate System</b> .....                                | <b>70</b>  |
| <b>6. DPO Locking Plate System</b> .....                             | <b>74</b>  |
| <b>7. FIXPINE Pedicle Screw Fixation System</b> .....                | <b>79</b>  |
| <b>8. Rotating Laminectomy Rongeur</b> .....                         | <b>84</b>  |
| <b>9. Trochleoplasty Set</b> .....                                   | <b>87</b>  |
| <b>10. Synthetic Ligament System</b> .....                           | <b>90</b>  |
| <b>11. MIO/MIPO Retractor</b> .....                                  | <b>95</b>  |
| <b>12. Stepless Adjustment Tools</b> .....                           | <b>99</b>  |
| <b>13. Orthopedic General Tools</b> .....                            | <b>103</b> |
| <b>14. Power Tools</b> .....   | <b>114</b> |
| <b>15. Plastic Bone Model</b> .....                                  | <b>119</b> |
| <b>16. 3D - Printed Synthetic Bone Graft</b> .....                   | <b>123</b> |
| <b>17. Veterinary Arthroscopy System</b> .....                       | <b>127</b> |
| • Scope and Scope Sheath .....                                       | <b>129</b> |
| • 4K Camera System .....   | <b>130</b> |
| • Veterinary Power Shaver .....                                      | <b>131</b> |
| • Veterinary Fluid Irrigation Pump .....                             | <b>132</b> |
| • Arthroscopy Basic Instrument Set .....                             | <b>133</b> |
| • Arthroscopy General Instrument .....                               | <b>136</b> |



# Total Hip Replacement System (THR)



# • Biological - Bionic THR System



## Big head with small cup

Close to the natural Cup-head ratio, maximum range of motion.



## Hard to luxate !!!



### Acetabular cup:

Double layer of metal cup. Inner liner made by CoCrMo for durability, inner surface was mirrorpolish treatment to provide a ultralow friction surface.

### PEEK femoral head

Currently one of the safest non-metal implants in clinical practice. Very low complication rate related to wear particles better biocompatibility and wear resistance than polyethylene.

### Cortex lateral bolt:

Lateral bolt fixed by purchasing the lateral cortex. Stable and rapid fixation by a self tapping bolt.

### Assembly neck:

Increase Head-neck ratio to increase range of motion and minimize post operative dislocation.

### Press-fit stem:

Minimum invasive approach, rapid bone integration, long term durability.

- All the metal materials we use are implant-grade titanium alloy (Ti6Al4V), which has superior biocompatibility and biological safety, and is the primary choice for joint implants.

## • Biological - Bionic THR System Implant Chart

| B-Cup    | U-Neck                  | Stem                    | Cortical Bolt  |
|----------|-------------------------|-------------------------|--|
| Φ15 - 12 | Small (+0, +3, +6, +9)  | #3                      | /  |
| Φ17 - 14 |                         | #4<br>#4.5<br>#5        | 12mm<br>14mm<br>16mm<br>18mm                         |
| Φ19 - 16 | Middle (+0, +3, +6, +9) | #6<br>#7<br>#8          | 14mm<br>16mm<br>18mm<br>20mm<br>22mm<br>24mm<br>26mm |
| Φ21 - 16 |                         |                         |  |
| Φ23 - 18 |                         |                         |  |
| Φ25 - 20 |                         |                         |  |
| Φ27 - 22 | Large (+0, +3, +6, +9)  | #9<br>#10<br>#11<br>#12 | 14mm<br>16mm<br>18mm<br>20mm<br>22mm<br>24mm<br>26mm |
| Φ29 - 24 |                         |                         |  |
| Φ31 - 26 |                         |                         |  |
| Φ33 - 28 |                         |                         |  |

### Note:

1. Implants with the same color in the picture can be used together.
2. Stems #3 – #8 are compatible with Small and Medium U-Neck sizes.
3. Φ19 – Φ33 acetabular cups are compatible with medium and large femoral necks.

# • Biological - Bionic THR System - Implants



## B-Cup (Bionic Cup)

| Size             | Product Code |
|------------------|--------------|
| Φ15 - Φ12 (Head) | 1971001512   |
| Φ17 - Φ14 (Head) | 1971001714   |
| Φ19 - Φ16 (Head) | 1971001916   |
| Φ21 - Φ16 (Head) | 1971002116   |
| Φ23 - Φ18 (Head) | 1971002318   |
| Φ25 - Φ20 (Head) | 1971002520   |
| Φ27 - Φ22 (Head) | 1971002722   |
| Φ29 - Φ24 (Head) | 1971002924   |
| Φ31 - Φ26 (Head) | 1971003126   |
| Φ33 - Φ28 (Head) | 1971003328   |



## B-Head (Bionic Head)

| Size | Product Code |
|------|--------------|
| Φ12  | 1972000012   |
| Φ14  | 1972000014   |
| Φ16  | 1972000016   |
| Φ18  | 1972000018   |
| Φ20  | 1972000020   |
| Φ22  | 1972000022   |
| Φ24  | 1972000024   |
| Φ26  | 1972000026   |
| Φ28  | 1972000028   |

## U-Neck (Universal Neck)



| Size     | Product Code |
|----------|--------------|
| Small+0  | 1972106160   |
| Small+2  | 1972106102   |
| Small+4  | 1972106104   |
| Middle+0 | 1973103150   |
| Middle+3 | 1973103153   |
| Middle+6 | 1973103156   |
| Middle+9 | 1973103159   |
| Large+0  | 1973106280   |
| Large+3  | 1973106283   |
| Large+6  | 1973106286   |
| Large+9  | 1973106289   |

# • Biological - Bionic THR System - Implants

## Stem (Biological Stem)



| Size | Product Code |
|------|--------------|
| #3   | 1962000003   |
| #4   | 1962000004   |
| #4.5 | 1962000045   |
| #5   | 1962000005   |
| #6   | 1962000006   |
| #7   | 1962000007   |
| #8   | 1962000008   |
| #9   | 1962000009   |
| #10  | 1962000010   |
| #11  | 1962000011   |
| #12  | 1962000012   |

## Cortical Bolt (Adapt to #4, #4.5, #5 stem)

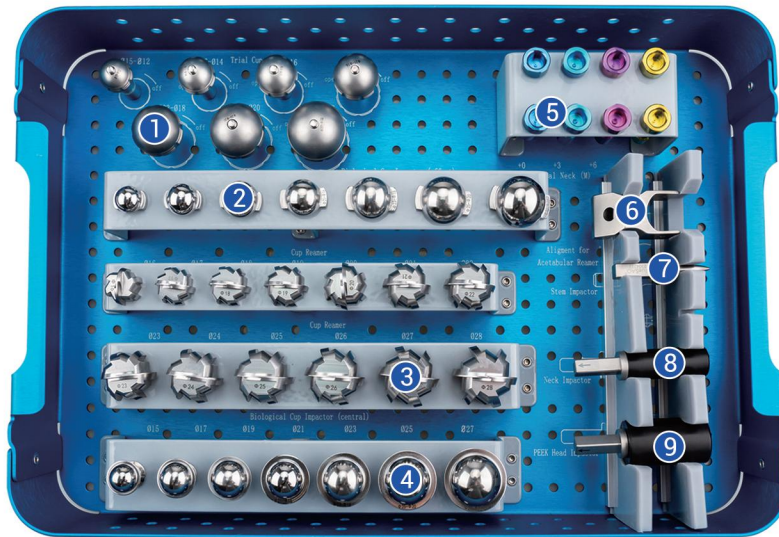


| Size           | Product Code |
|----------------|--------------|
| 12mm (#4 - #5) | 1961217121   |
| 14mm (#4 - #5) | 1961217142   |
| 16mm (#4 - #5) | 1961217163   |

## Cortical Bolt (Adapt to #6 - #12 stem)

| Size            | Product Code |
|-----------------|--------------|
| 14mm (#6 - #12) | 1961217414   |
| 16mm (#6 - #12) | 1961217416   |
| 18mm (#6 - #12) | 1961217418   |
| 20mm (#6 - #12) | 1961217420   |
| 22mm (#6 - #12) | 1961217422   |

# • Biological - Bionic THR System (M) - Tools



## Trial Bionic Cup



| Size               | Product Code |
|--------------------|--------------|
| Φ15 - Φ12 (Head)   | 1992001512   |
| Φ17 - Φ14 (Head)   | 1992001714   |
| 1 Φ19 - Φ16 (Head) | 1992001916   |
| Φ21 - Φ16 (Head)   | 1992002116   |
| Φ23 - Φ18 (Head)   | 1992002318   |
| Φ25 - Φ20 (Head)   | 1992002520   |
| Φ27 - Φ22 (Head)   | 1992002722   |

## Acetabular Reamer



| Size  | Product Code |
|-------|--------------|
| Φ15   | 2005000015   |
| Φ16   | 1902046016   |
| Φ17   | 1902046017   |
| Φ18   | 1902046018   |
| Φ19   | 1902046019   |
| 3 Φ20 | 1902046020   |
| Φ21   | 1902046021   |
| Φ22   | 1902046022   |
| Φ23   | 1902046023   |
| Φ24   | 1902046024   |
| Φ25   | 1902046025   |
| Φ26   | 1902046026   |
| Φ27   | 1902046027   |

## Bionic Cup Impactor (Offset)



| Size               | Product Code |
|--------------------|--------------|
| Φ15 - Φ12 (Head)   | 1994001512   |
| Φ17 - Φ14 (Head)   | 1994001714   |
| Φ19 - Φ16 (Head)   | 1994001916   |
| 2 Φ21 - Φ16 (Head) | 1994002116   |
| Φ23 - Φ18 (Head)   | 1994002318   |
| Φ25 - Φ20 (Head)   | 1994002520   |
| Φ27 - Φ22 (Head)   | 1994002722   |

# • Biological - Bionic THR System (M) - Tools

## Bionic Cup Impactor (Central)



| Size             | Product Code |
|------------------|--------------|
| Φ15 - Φ12 (Head) | 1994001512   |
| Φ17 - Φ14 (Head) | 1994001714   |
| Φ19 - Φ16 (Head) | 1994001916   |
| Φ21 - Φ16 (Head) | 1994002116   |
| Φ23 - Φ18 (Head) | 1994002318   |
| Φ25 - Φ20 (Head) | 1994002520   |
| Φ27 - Φ22 (Head) | 1994002722   |

4



## Bionic Trial Neck

| Size   | Product Code |
|--------|--------------|
| M (+0) | 1991000010   |
| M (+3) | 1991000013   |
| M (+6) | 1991000016   |
| M (+9) | 1991000019   |

5



## Reamer Alignment Guide

6

| Product Code |
|--------------|
| 1902018004   |



## Femoral Stem Impactor

7

| Product Code |
|--------------|
| 1902020006   |



## Neck Impactor

8

| Product Code |
|--------------|
| 1993002110   |

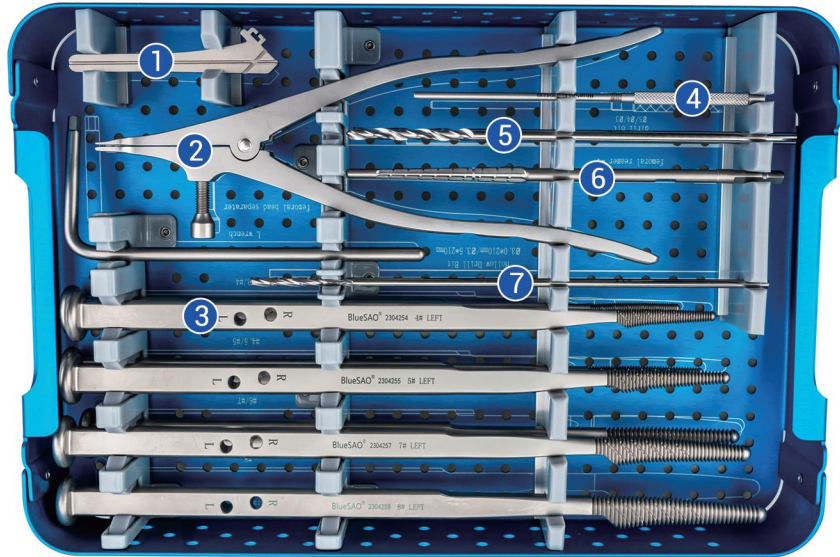


## PEEK Head Impactor

9

| Product Code |
|--------------|
| 1993002603   |

• **Biological - Bionic THR System (M) - Tools**



Neck Resection Template

1

Product Code

1610001901



Femoral Broach

3

Size

Product Code

#3

1902052003

#4

1902052004

#4.5

1902052045

#5

1902052005

#6

1902052006

#7

1902052007

#8

1902052008



Femoral Head Separator

2

Product Code

1902057011

# • Biological - Bionic THR System (M) - Tools



Retroversion Rod

| 4 | Product Code |
|---|--------------|
|   | 1902014001   |



Femoral Reamer

| 6 | Size | Product Code |
|---|------|--------------|
|   | #4   | 1902039004   |



Drill Bit

| 5 | Size | Product Code |
|---|------|--------------|
|   | φ3   | 1902059030   |
|   | φ4   | 1902059040   |



Hollow Drill Bit

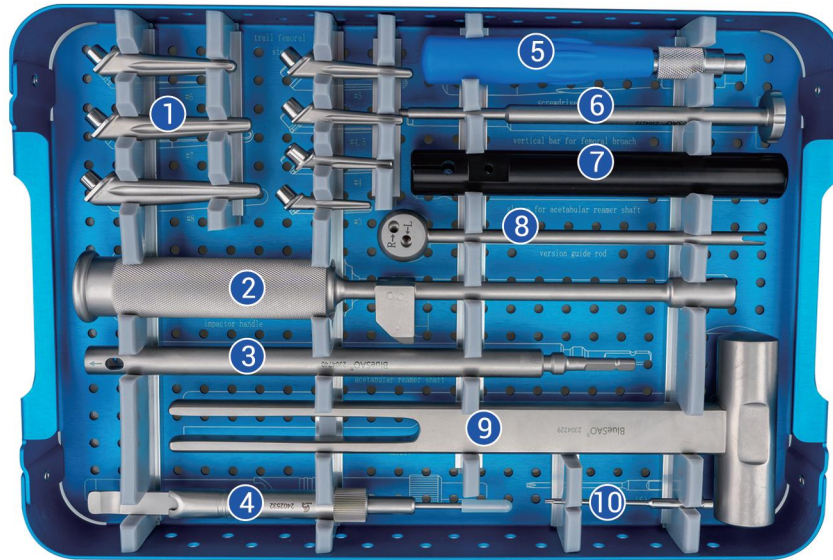
| 7 | Size       | Product Code |
|---|------------|--------------|
|   | φ3.0*210mm | 1993002130   |
|   | φ3.5*210mm | 1993002135   |



Drill Bit

| Size | Product Code |
|------|--------------|
| φ5   | 1902059050   |

# • Biological - Bionic THR System (M) - Tools



**Trial Femoral Stem**

| Size          | Product Code |
|---------------|--------------|
| #3            | 1996211803   |
| #4            | 1996211804   |
| <b>1</b> #4.5 | 1996211845   |
| #5            | 1996211805   |
| #6            | 1996211806   |
| #7            | 1996211807   |
| #8            | 1996211808   |



**Trial Femoral Stem**

|          |              |
|----------|--------------|
| <b>3</b> | Product Code |
|          | 1902016009   |



**Bolt Gauge**

|          |              |
|----------|--------------|
| <b>4</b> | Product Code |
|          | 1902056010   |



**Impactor Handle**

|          |              |
|----------|--------------|
| <b>2</b> | Product Code |
|          | 1902028008   |



**Screwdriver Handle**

|          |              |
|----------|--------------|
| <b>5</b> | Product Code |
|          | 0021102012   |

# • Biological - Bionic THR System (M) - Tools



Broach Handle

|   |              |
|---|--------------|
| 6 | Product Code |
|   | 1902026005   |



Mallet

|   |              |
|---|--------------|
| 9 | Product Code |
|   | 1902013000   |



Acetabular Reamer Sleeve

|   |              |
|---|--------------|
| 7 | Product Code |
|   | 1902017003   |



Screw Driver

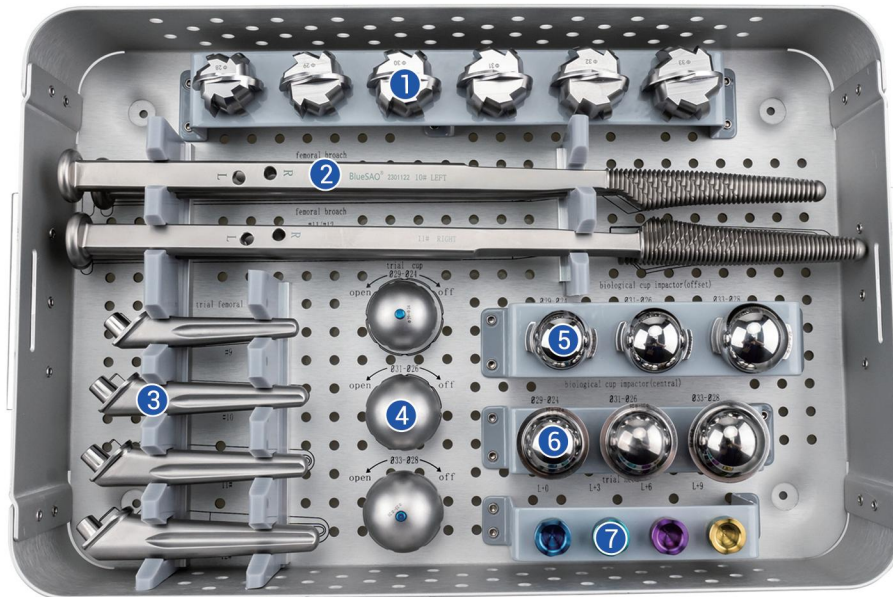
|    |      |              |
|----|------|--------------|
| 10 | Size | Product Code |
|    | S    | 0201102002   |



Version Guide Rod

|   |              |
|---|--------------|
| 8 | Product Code |
|   | 1902027007   |

# • Biological - Bionic THR System (L) - Tools



## Acetabular Reamer



| Size | Product Code |
|------|--------------|
| Φ28  | 1902046028   |
| Φ29  | 1902046029   |
| Φ30  | 1902046030   |
| Φ31  | 1902046031   |
| Φ32  | 1902046032   |
| Φ33  | 1902046033   |



## Femoral Broach

| Size | Product Code |
|------|--------------|
| #9   | 1902052009   |
| #10  | 1902052010   |
| #11  | 1902052011   |
| #12  | 1902052012   |

# • Biological - Bionic THR System (L) - Tools

## Trial Femoral Stem



3

| Size | Product Code |
|------|--------------|
| #9   | 1902068009   |
| #10  | 1902068010   |
| #11  | 1902069011   |
| #12  | 1902069012   |

## Bionic Cup Impactor (Central)



6

| Size            | Product Code |
|-----------------|--------------|
| Φ29 - 24 (Head) | 1994002924   |
| Φ31 - 26 (Head) | 1994003126   |
| Φ33 - 28 (Head) | 1994003328   |

## Trial Bionic Cup



4

| Size            | Product Code |
|-----------------|--------------|
| Φ29 - 24 (Head) | 1992002924   |
| Φ31 - 26 (Head) | 1992003126   |
| Φ33 - 28 (Head) | 1992003328   |



## Bionic Trial Neck

7

| Size   | Product Code |
|--------|--------------|
| L (+0) | 1991000020   |
| L (+3) | 1991000023   |
| L (+6) | 1991000026   |
| L (+9) | 1991000029   |

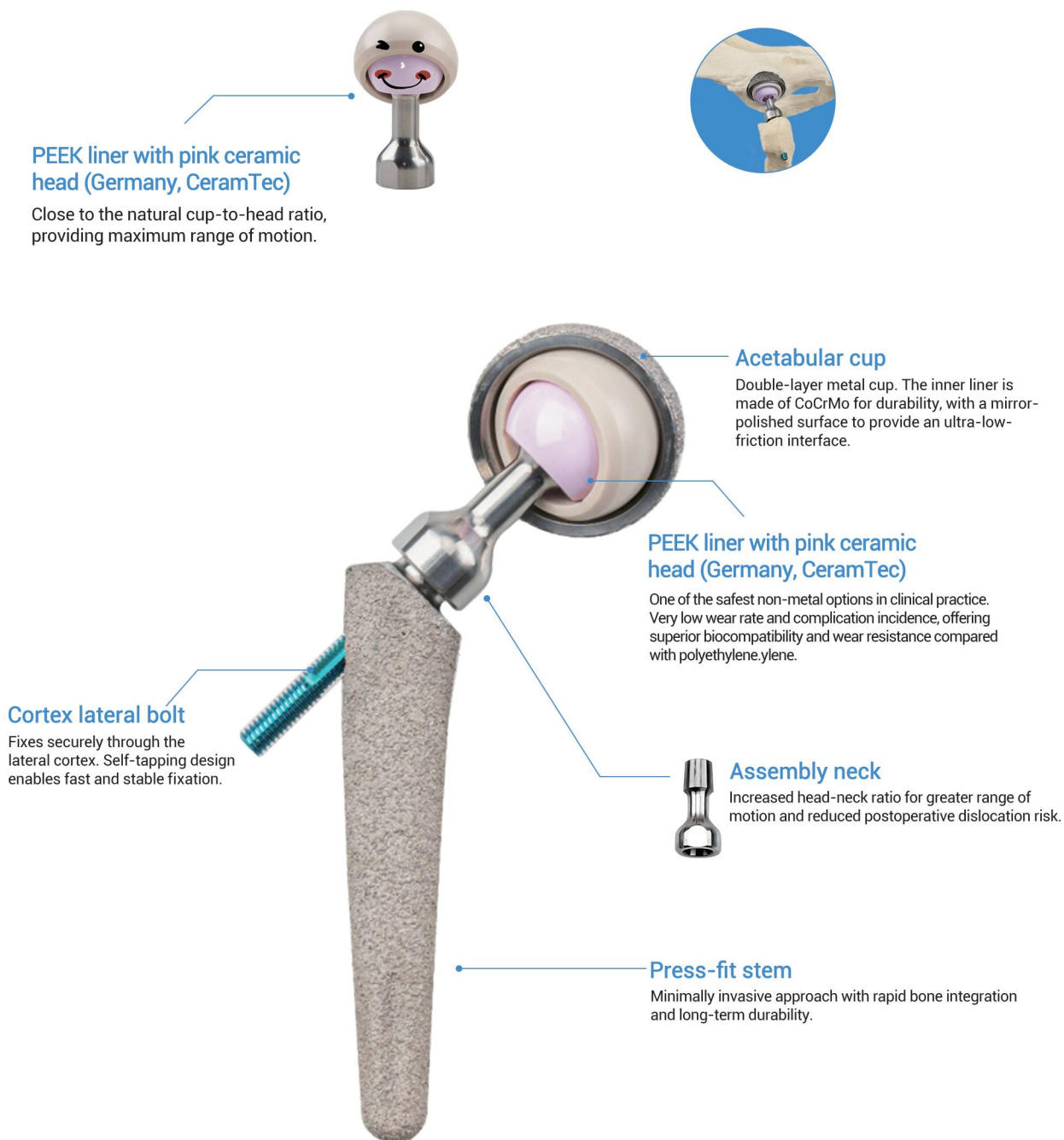
## Bionic Cup Impactor (Offset)



5

| Size            | Product Code |
|-----------------|--------------|
| Φ29 - 24 (Head) | 1995002924   |
| Φ31 - 26 (Head) | 1995003126   |
| Φ33 - 28 (Head) | 1995003328   |

# • Biological - Dual Mobility THR System



- All components, except the PEEK - lined German ceramic head, are made of titanium alloy Ti6Al4V, known for its superior biocompatibility and biological safety - the preferred material for joint implants.

## • Biological - Dual Mobility THR System Implant Chart

| D-Cup (PEEK Liner + Ceramic Head) | D-Neck                 | Stem           | Cortical Bolt                        |
|-----------------------------------|------------------------|----------------|--------------------------------------|
| Φ16 - 13 - 8                      | DS-Φ8<br>(+0, +2, +4)  | #3             | /                                    |
| Φ18 - 15 - 10                     | DS-Φ10<br>(+0, +2, +4) | #4             | 12mm                                 |
| Φ20 - 17 - 12                     | DS-Φ12<br>(+0, +2, +4) | #4.5<br>#5     | 14mm<br>16mm                         |
| Φ22 - 19 - 16<br>Φ24 - 19 - 16    | DS-DL<br>(+0, +2, +4)  | #6<br>#7<br>#8 | 14mm<br>16mm<br>18mm<br>20mm<br>22mm |
| Φ26 - 21 - 16                     | DL<br>(+0, +2, +4)     | #9             |                                      |
| Φ28 - 23 - 19                     |                        | #10            |                                      |
| Φ30 - 25 - 19                     |                        | #11            |                                      |
|                                   |                        | #12            |                                      |

### Note:

1. Implants with the same color in the chart can be used together.
2. Stems #3 - #8 are compatible with DS - Φ8, DS - Φ10, DS - Φ12, and DS - DL necks.
3. D-Cups Φ22 - Φ30 are compatible with DS - DL and DL necks.

# • Biological - Dual Mobility THR System - Implants



## D-Cup (Dual Mobility Cup)

| Size           | Product Code |
|----------------|--------------|
| Φ16 - 13 (I.D) | 1981001613   |
| Φ18 - 15 (I.D) | 1981001815   |
| Φ20 - 17 (I.D) | 1981002017   |
| Φ22 - 19 (I.D) | 1981002219   |
| Φ24 - 19 (I.D) | 1981002419   |
| Φ26 - 21 (I.D) | 1981002621   |
| Φ28 - 23 (I.D) | 1981002823   |
| Φ30 - 25 (I.D) | 1981003025   |
| Φ32 - 27 (I.D) | 1981003227   |
| Φ34 - 29 (I.D) | 1981003429   |



## D-C-Head (PEEK Liner-Ceramic Head)

| Size             | Product Code |
|------------------|--------------|
| Φ13 - Φ8 (Head)  | 1982001308   |
| Φ15 - Φ10 (Head) | 1982001510   |
| Φ17 - Φ12 (Head) | 1982001712   |
| Φ19 - Φ16 (Head) | 1982001916   |
| Φ21 - Φ16 (Head) | 1982002116   |
| Φ23 - Φ19 (Head) | 1982002319   |
| Φ25 - Φ19 (Head) | 1982002519   |



## Stem (Biological Stem)

| Size | Product Code |
|------|--------------|
| #3   | 1962000003   |
| #4   | 1962000004   |
| #4.5 | 1962000045   |
| #5   | 1962000005   |
| #6   | 1962000006   |
| #7   | 1962000007   |
| #8   | 1962000008   |
| #9   | 1962000009   |
| #10  | 1962000010   |
| #11  | 1962000011   |
| #12  | 1962000012   |

# • Biological - Dual Mobility THR System - Implants

## D-Neck (Dual Mobility Neck)



| Size   | Product Code |
|--|--------------|
| DS (+0) - $\Phi$ 8                           | 1984000080   |
| DS (+3) - $\Phi$ 8                           | 1984000083   |
| DS (+6) - $\Phi$ 8                           | 1984000086   |
| DS (+0) - $\Phi$ 10                          | 1984000100   |
| DS (+3) - $\Phi$ 10                          | 1984000103   |
| DS (+6) - $\Phi$ 10                          | 1984000106   |
| DS (+0) - $\Phi$ 12                          | 1984000120   |
| DS (+3) - $\Phi$ 12                          | 1984000123   |
| DS (+6) - $\Phi$ 12                          | 1984000126   |
| DS-DL (+0) - $\Phi$ 16, $\Phi$ 19, $\Phi$ 23 | 1984000160   |
| DS-DL (+3) - $\Phi$ 16, $\Phi$ 19, $\Phi$ 23 | 1984000163   |
| DS-DL (+6) - $\Phi$ 16, $\Phi$ 19, $\Phi$ 23 | 1984000166   |
| DL (+0) - $\Phi$ 16, $\Phi$ 19, $\Phi$ 23    | 1984000190   |
| DL (+3) - $\Phi$ 16, $\Phi$ 19, $\Phi$ 23    | 1984000193   |
| DL (+6) - $\Phi$ 16, $\Phi$ 19, $\Phi$ 23    | 1984000196   |

## Cortical Bolt (Adapt to #4, #4.5, #5 stem)



| Size | Product Code |
|------|--------------|
| 12mm | 1961217121   |
| 14mm | 1961217142   |
| 16mm | 1961217163   |

## Cortical Bolt (Adapt to #6 - #12 stem)

| Size | Product Code |
|------|--------------|
| 14mm | 1961217414   |
| 16mm | 1961217516   |
| 18mm | 1961217618   |
| 20mm | 1961217720   |
| 22mm | 1961217822   |

# • Biological - Dual Mobility THR System - Tools

## Trial D-Cup (Trial Dual Mobility Cup)



| Size           | Product Code |
|----------------|--------------|
| Φ16 - 13 (I.D) | 2002001613   |
| Φ18 - 15 (I.D) | 2002001815   |
| Φ20 - 17 (I.D) | 2002002017   |
| Φ22 - 19 (I.D) | 2002002219   |
| Φ24 - 19 (I.D) | 2002002419   |
| Φ26 - 21 (I.D) | 2002002621   |
| Φ28 - 23 (I.D) | 2002002823   |
| Φ30 - 25 (I.D) | 2002003025   |
| Φ32 - 27 (I.D) | 2002003227   |
| Φ34 - 29 (I.D) | 2002003439   |

## D-Cup Impactor (Central)



| Size            | Product Code |
|-----------------|--------------|
| Φ16 - Φ13 (I.D) | 2003001613   |
| Φ18 - Φ15 (I.D) | 2003001815   |
| Φ20 - Φ17 (I.D) | 2003002017   |
| Φ22 - Φ19 (I.D) | 2003002219   |
| Φ24 - Φ19 (I.D) | 2003002419   |
| Φ26 - Φ21 (I.D) | 2003002621   |
| Φ28 - Φ23 (I.D) | 2003002823   |
| Φ30 - Φ25 (I.D) | 2003003025   |
| Φ32 - Φ27 (I.D) | 2003003227   |
| Φ34 - Φ29 (I.D) | 2003003429   |

## Hollow Acetabular Reamer



| Size | Product Code |
|------|--------------|
| Φ15  | 2005000015   |
| Φ16  | 2005000016   |
| Φ17  | 2005000017   |
| Φ18  | 2005000018   |
| Φ19  | 2005000019   |
| Φ20  | 2005000020   |
| Φ21  | 2005000021   |
| Φ22  | 2005000022   |
| Φ23  | 2005000023   |
| Φ24  | 2005000024   |
| Φ25  | 2005000025   |
| Φ26  | 2005000026   |
| Φ27  | 2005000027   |
| Φ28  | 2005000028   |
| Φ29  | 2005000029   |
| Φ30  | 2005000030   |
| Φ31  | 2005000031   |
| Φ32  | 2005000032   |
| Φ33  | 2005000033   |
| Φ34  | 2005000034   |

## D-Cup Impactor (Offset)



| Size            | Product Code |
|-----------------|--------------|
| Φ16 - Φ13 (I.D) | 2004001613   |
| Φ18 - Φ15 (I.D) | 2004001815   |
| Φ20 - Φ17 (I.D) | 2004002017   |
| Φ22 - Φ19 (I.D) | 2004002219   |
| Φ24 - Φ19 (I.D) | 2004002419   |
| Φ26 - Φ21 (I.D) | 2004002621   |
| Φ28 - Φ23 (I.D) | 2004002823   |
| Φ30 - Φ25 (I.D) | 2004003025   |
| Φ32 - Φ27 (I.D) | 2004003227   |
| Φ34 - Φ29 (I.D) | 2004003429   |

# • Biological - Dual Mobility THR System - Tools



## Trial D-Neck (Dual Mobility Neck)

| Size                              | Product Code |
|-----------------------------------|--------------|
| DS (+0) - $\Phi$ 8                | 2001000080   |
| DS (+3) - $\Phi$ 8                | 2001000083   |
| DS (+6) - $\Phi$ 8                | 2001000086   |
| DS (+0) - $\Phi$ 10               | 2001000100   |
| DS (+3) - $\Phi$ 10               | 2001000103   |
| DS (+6) - $\Phi$ 10               | 2001000106   |
| DS (+0) - $\Phi$ 12               | 2001000120   |
| DS (+3) - $\Phi$ 12               | 2001000123   |
| DS (+6) - $\Phi$ 12               | 2001000126   |
| DS-DL (+0) - $\Phi$ 16, $\Phi$ 19 | 2001000160   |
| DS-DL (+3) - $\Phi$ 16, $\Phi$ 19 | 2001000163   |
| DS-DL (+6) - $\Phi$ 16, $\Phi$ 19 | 2001000166   |
| DL (+0) - $\Phi$ 16, $\Phi$ 19    | 2001000190   |
| DL (+3) - $\Phi$ 16, $\Phi$ 19    | 2001000193   |
| DL (+6) - $\Phi$ 16, $\Phi$ 19    | 2001000196   |

## PEEK Head Impactor



| Product Code |
|--------------|
| 1993002603   |

# • Cemented - Micro and Nano Bionic THR System



Big head with small cup  
**Hard to luxate !!!**



High-strength cobalt-chromium-molybdenum alloy stem

# • Cemented - Micro and Nano Bionic THR System Implants

## Acetabular Cup



| Size | Product Code |
|------|--------------|
| Φ11  | 2119720311   |
| Φ13  | 2119720213   |
| Φ15  | 2119720115   |
| Φ17  | 2119720115   |

## Femoral Head



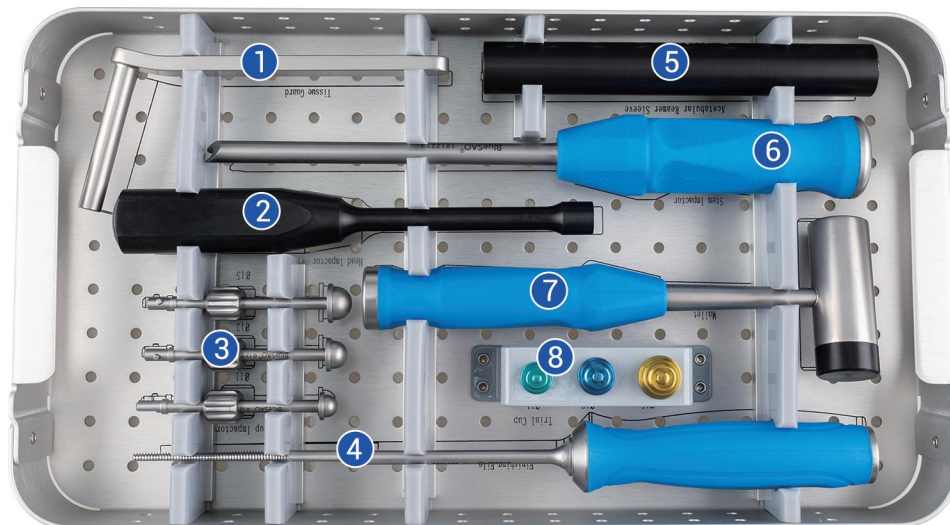
| Size     | Product Code |
|----------|--------------|
| Φ8 (+0)  | 1628001925   |
| Φ8 (+2)  | 1628001926   |
| Φ8 (+4)  | 1628001939   |
| Φ10 (+0) | 2119711000   |
| Φ10 (+2) | 2119711002   |
| Φ10 (+4) | 2119711004   |
| Φ12 (+0) | 2119712000   |
| Φ12 (+2) | 2119712002   |
| Φ12 (+4) | 2119712004   |

## Femoral Stem



| Size | Product Code |
|------|--------------|
| #1   | 1628001935   |
| #1.5 | 1628001915   |
| #2   | 1628001923   |
| #2.5 | 1628001925   |
| #3   | 1628001924   |
| #4S  | 1628002001   |

# • Cemented - Micro and Nano Bionic THR System Tools



Tissue Guard

|          |              |
|----------|--------------|
| <b>1</b> | Product Code |
|          | 1610001902   |



Cup Impactor

|          |      |              |
|----------|------|--------------|
| <b>3</b> | Size | Product Code |
|          | Φ11  | 2119740611   |
|          | Φ13  | 2119740513   |
|          | Φ15  | 2119740415   |



Head Impactor

|          |              |
|----------|--------------|
| <b>2</b> | Product Code |
|          | 2119740802   |



Finishing File

|          |              |
|----------|--------------|
| <b>4</b> | Product Code |
|          | 1610001907   |

# • Cemented - Micro and Nano Bionic THR System Tools



Cetabular Reamer Sleeve

|   |              |
|---|--------------|
| 5 | Product Code |
|   | 1610001914   |



Mallet

|   |              |
|---|--------------|
| 7 | Product Code |
|   | 1610001960   |



Stem Impactor

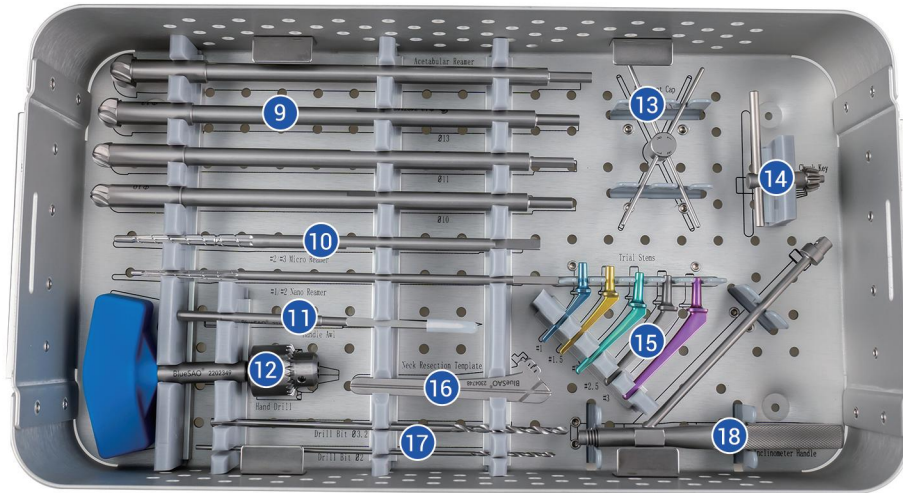
|   |              |
|---|--------------|
| 6 | Product Code |
|   | 1610001909   |



Trial Cup

| 8 | Size | Product Code |
|---|------|--------------|
|   |      | φ11          |
|   | φ13  | 2119720313   |
|   | φ15  | 2119720315   |

# • Cemented - Micro and Nano Bionic THR System Tools



Acetabular Reamer Sleeve

| 9 | Size | Product Code |
|---|------|--------------|
|   | Φ10  | 1610001910   |
|   | Φ11  | 2119730011   |
|   | Φ13  | 2119730013   |
|   | Φ15  | 2119730015   |



Handle Awl

| 11 | Product Code |
|----|--------------|
|    | 1610001961   |



Tapered Femoral Reamer

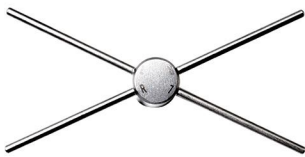
| 10 | Size  | Product Code |
|----|-------|--------------|
|    | #1/#2 | 1610001905   |
|    | #2/#3 | 1610001906   |



Hand Drill

| 12 | Product Code |
|----|--------------|
|    | 0800202022   |

# • Cemented - Micro and Nano Bionic THR System Tools



Alignment Cap

| 13 | Product Code |
|----|--------------|
|    | 1610001915   |



Neck Resection Template

| 16 | Product Code |
|----|--------------|
|    | 1610001901   |



Chuck Key

| 14 | Product Code |
|----|--------------|
|    | 1610001966   |



Drill Bit

| 17 | Size | Product Code |
|----|------|--------------|
|    | Φ2   | 1610001904   |
|    | Φ3.2 | 1610001903   |



Trial Stem

| 15  | Size       | Product Code |
|-----|------------|--------------|
|     | #1         | 1610001952   |
|     | #1.5       | 1610002966   |
|     | #2         | 1610001953   |
|     | #2.5       | 1610001925   |
|     | #3         | 1610001954   |
| #4S | 1610002063 |              |



Inclinometer Handle

| 18 | Product Code |
|----|--------------|
|    | 1610001916   |

# • THR General Instrument Set



**Gelpi Retractor**

| Product Code |
|--------------|
| 0301202002   |



**Round Rasper**

| Product Code |
|--------------|
| 0400402001   |



**Hatt Spoon (S)**

| Product Code |
|--------------|
| 1300101004   |



**Rongeur (Single Joint)**

| Product Code |
|--------------|
| 0300302001   |



**Bone Finger Skid**

| Product Code |
|--------------|
| 0300702004   |



**Osteotome**

| Size | Product Code |
|------|--------------|
| 4mm  | 0400102004   |



**Bone Curette**

| Product Code |
|--------------|
| 1650000005   |



**Drag Hook**

| Size            | Product Code |
|-----------------|--------------|
| 190mm, S:D=20mm | 0300602001   |
| 190mm, L:D=30mm | 0300602002   |

# • THR General Instrument Set



**Bone Holding Forceps (M)**

|              |
|--------------|
| Product Code |
| 0300102002   |



**Hoffman Retractor (S)**

|              |
|--------------|
| Product Code |
| 1300101001   |



**Femoral Head Separator Forceps**

|              |
|--------------|
| Product Code |
| 1650000002   |



**Femoral Stem Installation and Removal Set**

|              |
|--------------|
| Product Code |
| 1650000001   |



**Periosteal Dissector**

|              |
|--------------|
| Product Code |
| 0300502002   |



**Controllable Suction**

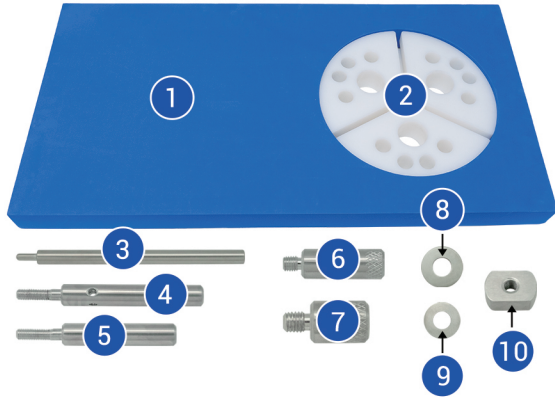
| Size | Product Code |
|------|--------------|
| 3mm  | 1650000003   |
| 4mm  | 1650000004   |



**Container**

|              |
|--------------|
| Product Code |
| 1610001958   |

# • THR Ancillary Products



**Positioning Board Set (Large)**

| NO. | Item                | Product Code |
|-----|---------------------|--------------|
| 1   | Foam Pad ×1         | 1922000002   |
| 2   | Positioning Disk ×1 | 1921000001   |
| 3   | Tightening Rod ×1   | 1923000001   |
| 4   | Long Post ×2        | 1923000003   |
| 5   | Short Post ×1       | 1923000002   |
| 6   | Long Extension ×2   | 1923000005   |
| 7   | Short Extension ×2  | 1923000004   |
| 8   | Large Washer ×3     | 1923000006   |
| 9   | Small Washer ×3     | 1923000007   |
| 10  | Guide Nut ×3        | 1923000008   |



| Item                                   | Product Code |
|--|--------------|
| Hip Surgical Pack                      | 1610001965   |
| Includes:                              |              |
| Table Cover (140cm ×140cm) ×1          |              |
| Operation Pad (90cm ×90cm) ×2          |              |
| Operation Pad (90cm ×120cm) ×2         |              |
| Non-woven Pad (120cm ×140cm) ×1        |              |
| PE Pad with Iodine (3M, 56cm ×45cm) ×1 |              |
| Self-adhesive Bandage (5cm) ×1         |              |
| Suction Tubing (200cm) ×1              |              |



**Positioning Board Set (Small)**

| Product Code |
|--------------|
| 1650000009   |



**Antibiotic bone cement**

| Product Code |
|--------------|
| 1630000005   |

# • THR Ancillary Products



Small vacuum plastic pad

| Size    | Product Code |
|---------|--------------|
| 40*60cm | 01.060013    |



Large Vacuum Plastic Pad

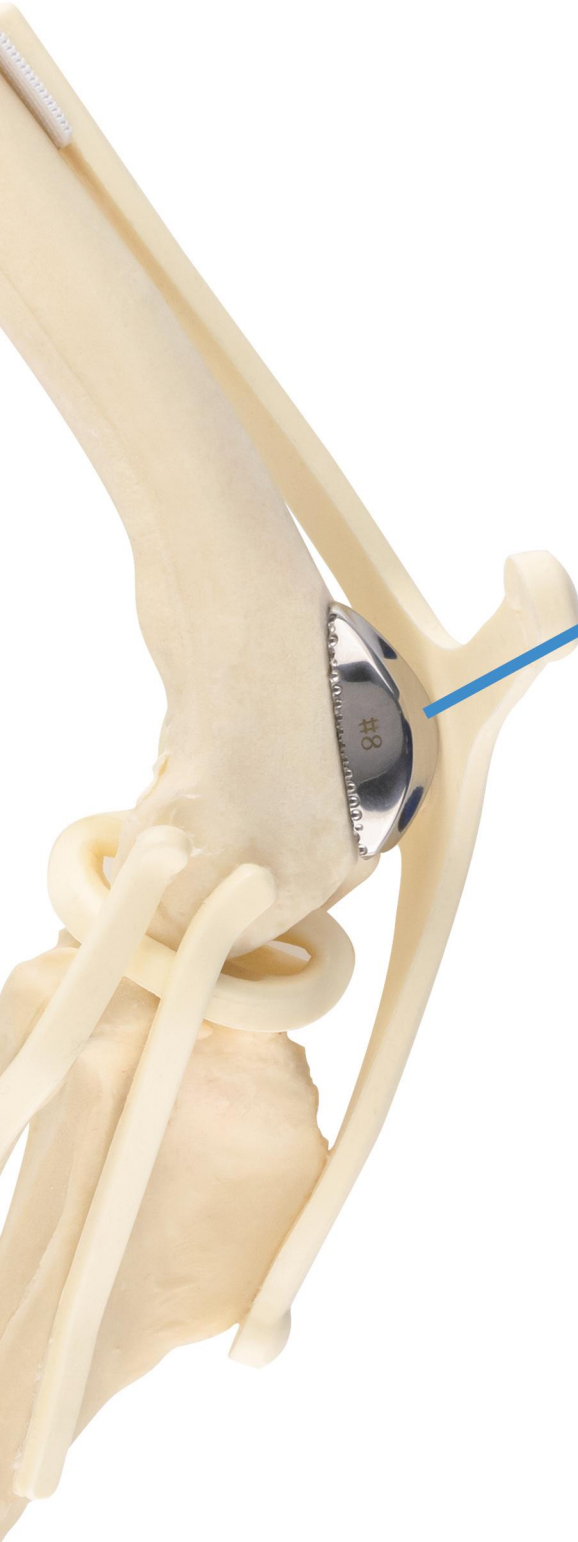
| Size     | Product Code |
|----------|--------------|
| 60*100cm | 01.060012    |



2.

## Biological Patellar Groove Replacement System (Bio-PGR)

- **Biological Patellar Groove Replacement System (Bio-PGR)**



- No coating
- Mirror polished
- Ultra-low friction



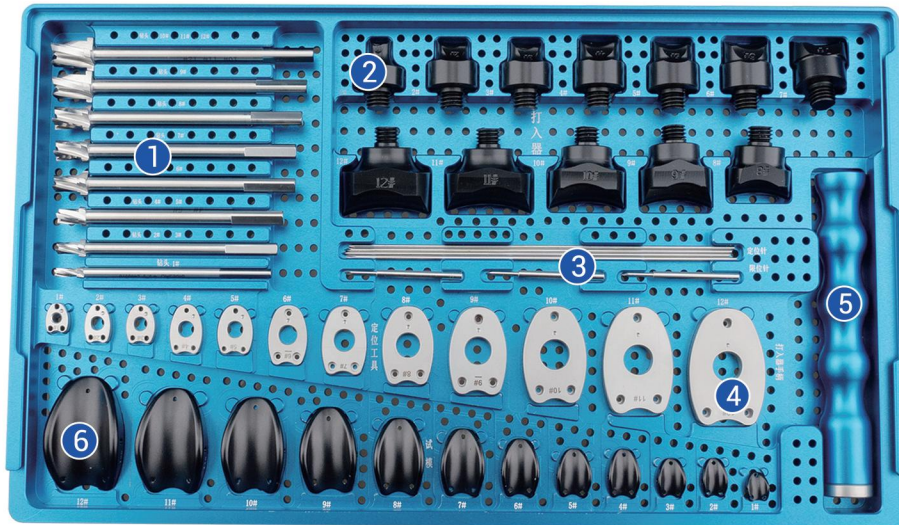
## • Bio-PGR System - Implants



### Implanted Prosthesis

| Size    | Product Code |
|---------|--------------|
| size 1  | 2302280101   |
| size 2  | 2302280102   |
| size 3  | 2302280103   |
| size 4  | 2302280104   |
| size 5  | 2302280105   |
| size 6  | 2302280106   |
| size 7  | 2302280107   |
| size 8  | 2302280108   |
| size 9  | 2302280109   |
| size 10 | 2302280110   |
| size 11 | 2302280111   |
| size 12 | 2302280112   |

# • Bio-PGR System - Tools



Drill Bit (Depth Limited)

| Size | Product Code |
|------|--------------|
| Φ3.5 | 2300280501   |
| Φ5   | 2300280502   |
| Φ6   | 2300280503   |
| Φ7   | 2300280504   |
| Φ8   | 2300280505   |
| Φ9   | 2300280506   |
| Φ10  | 2300280507   |
| Φ11  | 2300280508   |



Impactor

| Size | Product Code |
|------|--------------|
| #1   | 2300280401   |
| #2   | 2300280402   |
| #3   | 2300280403   |
| #4   | 2300280404   |
| #5   | 2300280405   |
| #6   | 2300280406   |
| #7   | 2300280407   |
| #8   | 2300280408   |
| #9   | 2300280409   |
| #10  | 2300280410   |
| #11  | 2300280411   |
| #12  | 2300280412   |

## • Bio-PGR System - Tools



K-wire Pin (Depth Limited)

| 3 | Size | Product Code |
|---|------|--------------|
|   | Φ1.8 | 2300280718   |



Impactor Handle

| 5 | Product Code |
|---|--------------|
|   | 2300002806   |



Positioning Tools

| 4 | Size | Product Code |
|---|------|--------------|
|   | #1   | 2300280301   |
|   | #2   | 2300280302   |
|   | #3   | 2300280303   |
|   | #4   | 2300280304   |
|   | #5   | 2300280305   |
|   | #6   | 2300280306   |
|   | #7   | 2300280307   |
|   | #8   | 2300280308   |
|   | #9   | 2300280309   |
|   | #10  | 2300280310   |
|   | #11  | 2300280311   |
|   | #12  | 2300280312   |



Trial Prosthesis

| 6 | Size | Product Code |
|---|------|--------------|
|   | #1   | 2300280201   |
|   | #2   | 2300280202   |
|   | #3   | 2300280203   |
|   | #4   | 2300280204   |
|   | #5   | 2300280205   |
|   | #6   | 2300280206   |
|   | #7   | 2300280207   |
|   | #8   | 2300280208   |
|   | #9   | 2300280209   |
|   | #10  | 2300280210   |
|   | #11  | 2300280211   |
|   | #12  | 2300280212   |



3.

## TPLO Locking Plate System

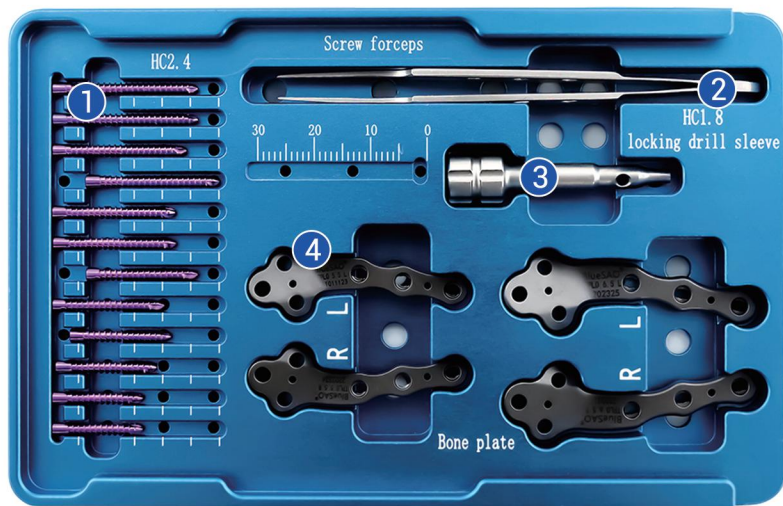
# • Clover - TPLO Locking Plate System



Tapered Conical Cannulated Locking Screw

Threaded Post Locking Cortical Bone Screw

# • Clover - TPLO Locking Plate System (S)



HC Locking Screw  $\Phi$ 2.4

| 1 | Size | Product Code |
|---|------|--------------|
|   | 12mm | 0100301512   |
|   | 14mm | 0100301514   |
|   | 16mm | 0100301516   |
|   | 18mm | 0100301518   |
|   | 20mm | 0100301520   |
|   | 22mm | 0100301522   |
|   | 24mm | 0100301524   |
|   | 26mm | 0100301526   |
|   | 28mm | 0100301528   |
|   | 30mm | 0100301530   |
|   | 32mm | 0100301532   |
|   | 34mm | 0100301534   |
|   | 36mm | 0100301536   |
|   | 38mm | 0100301538   |
|   | 40mm | 0100301540   |



Screw Forceps

| 2 | Size | Product Code |
|---|------|--------------|
|   | Mini | 0201202001   |



HC  $\Phi$ 1.8 Drill Sleeve ( Locking )

| 3 | Size         | Product Code |
|---|--------------|--------------|
|   | $\Phi$ 1.8mm | 1400101218   |



Bone Plate

| 4 | Size    | Product Code |
|---|---------|--------------|
|   | 5.5mm,L | 1400101001   |
|   | 5.5mm,R | 1400101002   |
|   | 6.5mm,L | 1400101003   |
|   | 6.5mm,R | 1400101004   |
|   | 7mm,L   | 1400101027   |
|   | 7mm,R   | 1400101028   |

# • Clover - TPLO Locking Plate System (M)



HC Locking Screw  $\Phi$ 3.5

| 1 | Size | Product Code |
|---|------|--------------|
|   | 24mm | 0100301624   |
|   | 26mm | 0100301626   |
|   | 28mm | 0100301628   |
|   | 30mm | 0100301630   |
|   | 32mm | 0100301632   |
|   | 34mm | 0100301634   |
|   | 36mm | 0100301636   |
|   | 38mm | 0100301638   |
|   | 40mm | 0100301640   |



HC  $\Phi$ 2.5 Drill Sleeve ( Locking )

| 3 | Size         | Product Code |
|---|--------------|--------------|
|   | $\Phi$ 2.5mm | 1400101225   |



Bone Plate

| 4 | Size    | Product Code |
|---|---------|--------------|
|   | 8.5mm,L | 1400101005   |
|   | 8.5mm,R | 1400101006   |
|   | 9.5mm,L | 1400101007   |
|   | 9.5mm,R | 1400101008   |



Screw Forceps

| 2 | Size | Product Code |
|---|------|--------------|
|   | Mini | 0201202001   |

# • Clover - TPLO Locking Plate System (L)



HC Locking Screw  $\Phi$ 4.0

| 1 | Size | Product Code |
|---|------|--------------|
|   | 30mm | 0100301430   |
|   | 32mm | 0100301432   |
|   | 34mm | 0100301434   |
|   | 36mm | 0100301436   |
|   | 38mm | 0100301438   |
|   | 40mm | 0100301440   |
|   | 42mm | 0100301442   |
|   | 44mm | 0100301444   |
|   | 46mm | 0100301446   |
|   | 48mm | 0100301448   |
|   | 50mm | 0100301450   |



Bone Plate

| 3 | Size     | Product Code |
|---|----------|--------------|
|   | 10.5mm,L | 1400101009   |
|   | 10.5mm,R | 1400101010   |
|   | 11.5mm,L | 1400101011   |
|   | 11.5mm,R | 1400101012   |



HC  $\Phi$ 3.0 Drill Sleeve ( Locking )

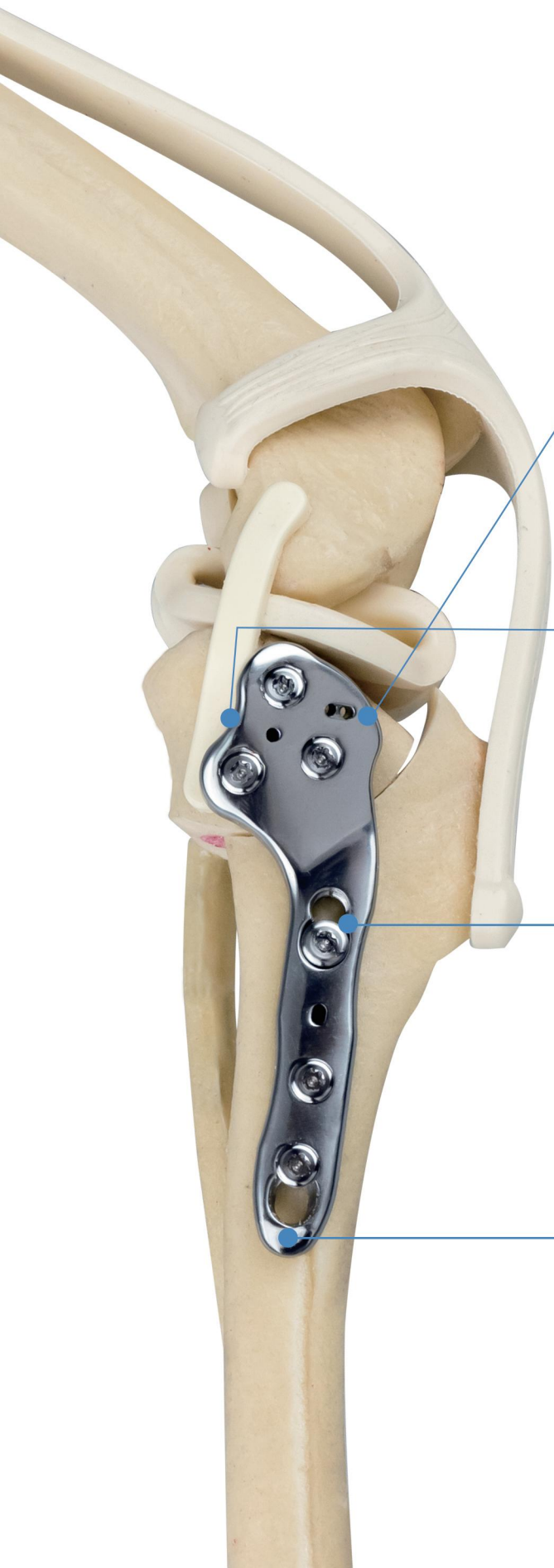
| 4 | Size         | Product Code |
|---|--------------|--------------|
|   | $\Phi$ 3.0mm | 1400101230   |



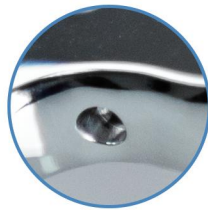
Screw Forceps

| 2 | Size | Product Code |
|---|------|--------------|
|   | Mini | 0201202001   |

# • Cobra - TPLO Locking Plate System



Ligament holes designed to assist in ligament fixation



Convenient clamping area for TPLO reduction forceps



Dual compression holes for stable fixation along the osteotomy line



Distal arc-shaped design with sloping contour for anatomical fit

# • Cobra - TPLO Locking Plate System Implants



## TPLO Bone Plate

| Size  | Product Code |
|-------|--------------|
| 5.5R  | 2500183515   |
| 5.5L  | 2500183516   |
| 6.5R  | 2500183517   |
| 6.5L  | 2500183518   |
| 7.5R  | 2500183519   |
| 7.5L  | 2500183520   |
| 8.5R  | 2500183521   |
| 8.5L  | 2500183522   |
| 9.5R  | 2500183523   |
| 9.5L  | 2500183524   |
| 10.5R | 2500183525   |
| 10.5L | 2500183526   |
| 11.5R | 2500183527   |
| 11.5L | 2500183528   |



## HL Φ2.4 Locking Screw

| Size | Product Code |
|------|--------------|
| 10mm | 2518332410   |
| 12mm | 2518332412   |
| 14mm | 2518332414   |
| 16mm | 2518332416   |
| 18mm | 2518332418   |
| 20mm | 2518332420   |
| 22mm | 2518332422   |
| 24mm | 2518332424   |
| 26mm | 2518332426   |
| 28mm | 2518332428   |
| 30mm | 2518332430   |



## HL Φ2.7 Locking Screw

| Size | Product Code |
|------|--------------|
| 14mm | 2518332714   |
| 16mm | 2518332716   |
| 18mm | 2518332718   |
| 20mm | 2518332720   |
| 22mm | 2518332722   |
| 24mm | 2518332724   |
| 26mm | 2518332726   |
| 28mm | 2518332728   |
| 30mm | 2518332730   |
| 32mm | 2518332732   |

# • Cobra - TPLO Locking Plate System Implants



## HL Φ3.2 Locking Screw

| Size | Product Code |
|------|--------------|
| 18mm | 2518333218   |
| 20mm | 2518333220   |
| 22mm | 2518333222   |
| 24mm | 2518333224   |
| 26mm | 2518333226   |
| 28mm | 2518333228   |
| 30mm | 2518333230   |
| 32mm | 2518333232   |
| 34mm | 2518333234   |
| 36mm | 2518333236   |



## HL Φ4.0 Locking Screw

| Size | Product Code |
|------|--------------|
| 20mm | 2518334020   |
| 22mm | 2518334022   |
| 24mm | 2518334024   |
| 26mm | 2518334026   |
| 28mm | 2518334028   |
| 30mm | 2518334030   |
| 32mm | 2518334032   |
| 34mm | 2518334034   |
| 36mm | 2518334036   |
| 38mm | 2518334038   |
| 40mm | 2518334040   |
| 42mm | 2518334042   |
| 44mm | 2518334044   |



## HL Φ2.0 Compression Screw

| Size | Product Code |
|------|--------------|
| 10mm | 2518342010   |
| 12mm | 2518342012   |
| 14mm | 2518342014   |
| 16mm | 2518342016   |



## HL Φ2.4 Compression Screw

| Size | Product Code |
|------|--------------|
| 10mm | 2518342410   |
| 12mm | 2518342412   |
| 14mm | 2518342414   |
| 16mm | 2518342416   |
| 18mm | 2518342418   |



## HL Φ2.7 Compression Screw

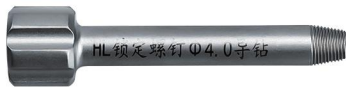
| Size | Product Code |
|------|--------------|
| 14mm | 2518342410   |
| 16mm | 2518342412   |
| 18mm | 2518342414   |
| 20mm | 2518342416   |
| 22mm | 2518342418   |



## HL Φ3.5 Compression Screw

| Size | Product Code |
|------|--------------|
| 18mm | 2518343518   |
| 20mm | 2518343520   |
| 22mm | 2518343522   |
| 24mm | 2518343524   |
| 26mm | 2518343526   |

# • Cobra - TPLO Locking Plate System Tools



## HL Locking Drill Sleeve

| Size | Product Code |
|------|--------------|
| Φ1.8 | 2500183618   |
| Φ2.0 | 2500183620   |
| Φ2.5 | 2500183625   |
| Φ3.0 | 2500183630   |



## Compression Sleeve

| Size | Product Code |
|------|--------------|
| Φ1.5 | 2500183715   |
| Φ1.8 | 2500183718   |
| Φ2.0 | 2500183720   |
| Φ2.5 | 2500183725   |



## Screwdriver Handle

| Product Code |
|--------------|
| 0021102012   |



## Screwdriver

| Size | Product Code |
|------|--------------|
| S    | 0201102002   |
| L    | 0201102003   |

# • Mini - TPLO Locking Plate System



◆ TPLO - Mini Bone plate  
Material: pure titanium

◆ Locking screws  
Material: titanium alloy



# • Mini - TPLO Locking Plate System



HL Locking Screws  $\Phi$ 1.8mm

| 1 | Size | Product Code |
|---|------|--------------|
|   | 6mm  | 0100401806   |
|   | 7mm  | 0100401807   |
|   | 8mm  | 0100401808   |
|   | 10mm | 0100401810   |
|   | 12mm | 0100401812   |
|   | 14mm | 0100401814   |
|   | 16mm | 0100401816   |
|   | 18mm | 0100401818   |
|   | 20mm | 0100401820   |
|   | 22mm | 0100401822   |



Screw Forceps

| 2 | Size | Product Code |
|---|------|--------------|
|   | Mini | 0201202003   |



HL  $\Phi$ 1.3 Drill Sleeve (Locking)

| 3 | Size         | Product Code |
|---|--------------|--------------|
|   | $\Phi$ 1.3mm | 1400101214   |

# • Mini - TPLO Locking Plate System



Φ1.3mm Drill Bit (Quick Coupling)

| 4 | Size   | Product Code |
|---|--------|--------------|
|   | Φ1.3mm | 0200102013   |



Screwdriver With Handle (Integrated)

| 6 | Product Code |
|---|--------------|
|   | 0201102190   |



TPLO Bone Plate (L-Shape)

| 5 | Size    | Product Code |
|---|---------|--------------|
|   | 4.0mm,L | 1400101017   |
|   | 4.0mm,R | 1400101018   |



Depth Gauge

| 7 | Size | Product Code |
|---|------|--------------|
|   | 20mm | 0201302020   |



TPLO Bone Plate

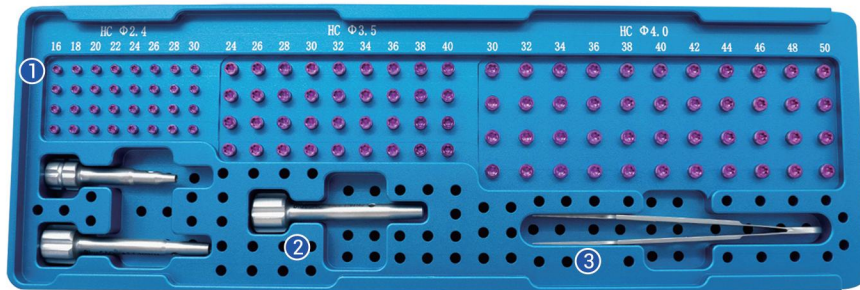
|  | Size    | Product Code |
|--|---------|--------------|
|  | 4.0mm,L | 1400101015   |
|  | 4.0mm,R | 1400101016   |



TPLO Saw Blade

| 8 | Size | Product Code |
|---|------|--------------|
|   | R10  | 0501322002   |
|   | R12  | 0501322003   |

# • TPLO Container For (S M L)



HC Locking Screw  $\Phi 2.4$

| 1 | Size | Product Code |
|---|------|--------------|
|   | 16mm | 0100301516   |
|   | 18mm | 0100301518   |
|   | 20mm | 0100301520   |
|   | 22mm | 0100301522   |
|   | 24mm | 0100301524   |
|   | 26mm | 0100301526   |
|   | 28mm | 0100301528   |
|   | 30mm | 0100301530   |



HC Locking Screw  $\Phi 3.5$

| 1 | Size | Product Code |
|---|------|--------------|
|   | 24mm | 0100301624   |
|   | 26mm | 0100301626   |
|   | 28mm | 0100301628   |
|   | 30mm | 0100301630   |
|   | 32mm | 0100301632   |
|   | 34mm | 0100301634   |
|   | 36mm | 0100301636   |
|   | 38mm | 0100301638   |
|   | 40mm | 0100301640   |



HC Locking Screw  $\Phi 4.0$

| 1 | Size | Product Code |
|---|------|--------------|
|   | 30mm | 0100301430   |
|   | 32mm | 0100301432   |
|   | 34mm | 0100301434   |
|   | 36mm | 0100301436   |
|   | 38mm | 0100301438   |
|   | 40mm | 0100301440   |
|   | 42mm | 0100301442   |
|   | 44mm | 0100301444   |
|   | 46mm | 0100301446   |
|   | 48mm | 0100301448   |
|   | 50mm | 0100301450   |



HC Drill Sleeve ( Locking )

| 2 | Size                | Product Code |
|---|---------------------|--------------|
|   | $\Phi 1.8\text{mm}$ | 1400101218   |
|   | $\Phi 2.5\text{mm}$ | 1400101225   |
|   | $\Phi 3.0\text{mm}$ | 1400101230   |



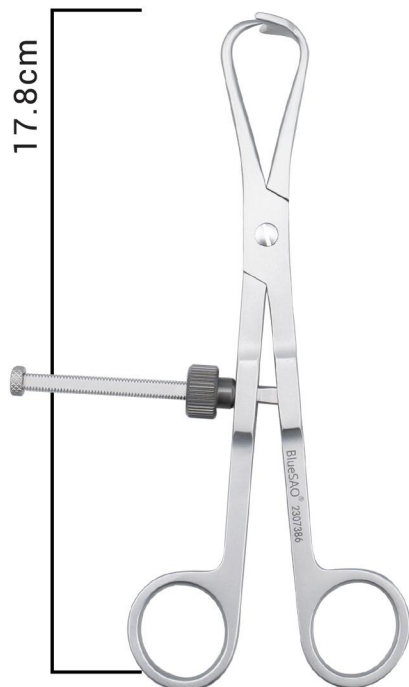
Screw Forceps

| 3 | Size | Product Code |
|---|------|--------------|
|   | Mini | 0201202001   |

## • TPLO Reduction Forceps



| Size | Product Code |
|------|--------------|
| L    | 1400101501   |
| S    | 1400101503   |



# • JIG



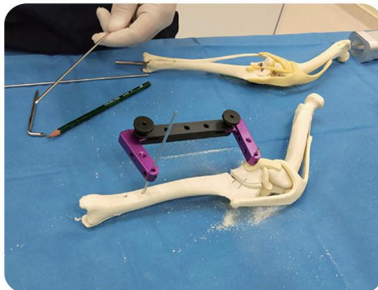
JIG

| Size | Product Code |
|------|--------------|
| L    | 0206002002   |



JIG

| Size | Product Code |
|------|--------------|
| S    | 0206002001   |





4.

# PRCL Locking Plate System

# PRCL<sup>®</sup> -Locking Plate System

## Point-contact

Each hole of the bone plate is in contact with the bone surface through two points, and the arched structure has better stability.

## Reconstruction

It can be shaped in three ways: in-plane bending, side bending and twisting.

## Compression

The screw slides towards the center of the bone plate hole through the slide rail, then moving by compression.

## Locking

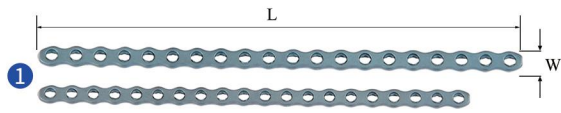
The bone plate holes have threads, and all the threads on the screws can be locked with the bone plate holes by column locking.



# PRCL<sup>®</sup> - Mini

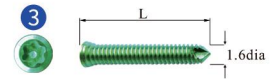


## Implants



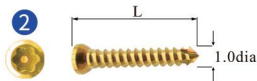
Bone Plate Material: Titanium

| Width | Length | Number Of Holes | Product Code |
|-------|--------|-----------------|--------------|
| 3.5mm | 79.5mm | 20              | 0100100035   |
| 4.0mm | 89.5mm | 20              | 0100100040   |



1.6mm Locking Screw  
Material: Titanium Alloy

| Length | Product Code |
|--------|--------------|
| 5mm    | 0100301005   |
| 6mm    | 0100301006   |
| 7mm    | 0100301007   |
| 8mm    | 0100301008   |
| 9mm    | 0100301009   |
| 10mm   | 0100301010   |



1.0mm Cortical Screw  
Material: Titanium Alloy

| Length | Product Code |
|--------|--------------|
| 5mm    | 0100201005   |
| 6mm    | 0100201006   |
| 7mm    | 0100201007   |
| 8mm    | 0100201008   |
| 9mm    | 0100201009   |
| 10mm   | 0100201010   |
| 11mm   | 0100201011   |
| 12mm   | 0100201012   |

# PRCL<sup>®</sup> - Mini

## Tools



| Product Name  | Product Code |
|---------------|--------------|
| Screw Forceps | 0201202001   |



| Size | Product Code |
|------|--------------|
| φ0.7 | 0200602007   |



| Size      | Product Code |
|-----------|--------------|
| φ0.7/φ1.1 | 0200502000   |



| Size | Product Code |
|------|--------------|
| φ1.1 | 0200402011   |



| Size | Product Code |
|------|--------------|
| Mini | 0200302100   |



| Size | Product Code |
|------|--------------|
| φ0.7 | 0200102007   |
| φ1.1 | 0200102011   |



| Product Name                 | Product Code |
|------------------------------|--------------|
| Screwdriver (Quick Coupling) | 0201102001   |



| Product Name       | Product Code |
|--------------------|--------------|
| Screwdriver Handle | 0201102011   |



| Size | Product Code |
|------|--------------|
| φ1.1 | 0200302011   |



**Bending Jig For In-Plane Bending**

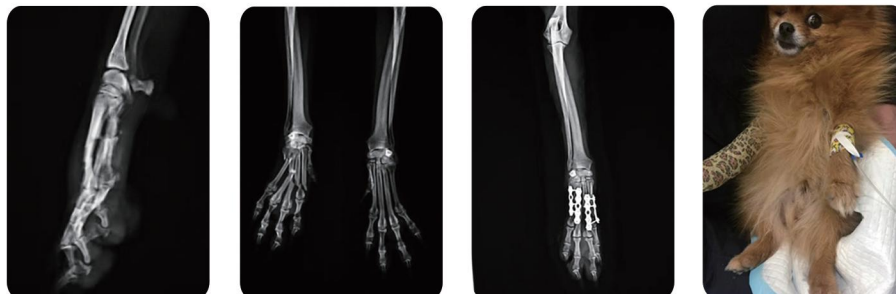
| Size  | Product Code |
|-------|--------------|
| 3.5mm | 0200902001   |
| 4mm   | 0200902002   |



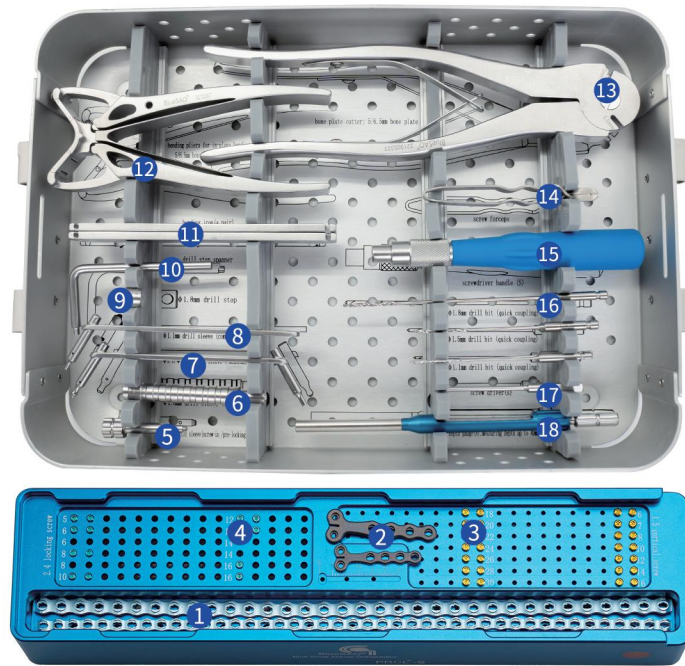
| Product Name                          | Product Code |
|---------------------------------------|--------------|
| Tray (Holds Instruments And Implants) | 0202102001   |

## Clinical Case:

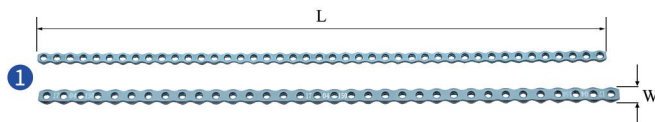
A Pomeranian dog, suffered from the metacarpus fracture, fixed with PRCL-Mini locking plates.



# PRCL<sup>®</sup> - S



## Implants



**Bone Plate** Material: Titanium

| Width | Length  | Number Of Holes | Product Code |
|-------|---------|-----------------|--------------|
| 5mm   | 236.5mm | 43              | 0100100150   |
| 6.5mm | 238mm   | 34              | 0100100165   |



**T-Shaped Bone Plate** Material: Titanium

| W1    | Length | Number Of Holes | Product Code |
|-------|--------|-----------------|--------------|
| 5mm   | 32.5mm | 6               | 0100100550   |
| 6.5mm | 41.5mm | 6               | 0100100565   |

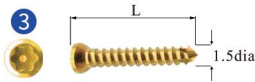


**L Bone Plate** Material: Titanium

| W1    | Length | Number Of Holes | Product Code (L) | Product Code (R) |
|-------|--------|-----------------|------------------|------------------|
| 5mm   | 36.7mm | 7               | 0100100651       | 0100100652       |
| 6.5mm | 47.4mm | 7               | 0100100661       | 0100100662       |

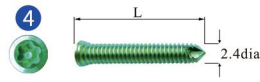
# PRCL<sup>®</sup> - S

## Implants



1.5mm Cortical Screw  
Material: Titanium Alloy

| Length | Product code |
|--------|--------------|
| 6mm    | 0100201106   |
| 7mm    | 0100201107   |
| 8mm    | 0100201108   |
| 10mm   | 0100201110   |
| 12mm   | 0100201112   |
| 14mm   | 0100201114   |
| 16mm   | 0100201116   |
| 18mm   | 0100201118   |
| 20mm   | 0100201120   |
| 22mm   | 0100201122   |
| 24mm   | 0100201124   |
| 26mm   | 0100201126   |
| 28mm   | 0100201128   |
| 30mm   | 0100201130   |



2.4mm Locking Screw  
Material: Titanium Alloy

| Length | Product Code |
|--------|--------------|
| 5mm    | 0100301105   |
| 6mm    | 0100301106   |
| 8mm    | 0100301108   |
| 10mm   | 0100301110   |
| 12mm   | 0100301112   |
| 14mm   | 0100301114   |
| 16mm   | 0100301116   |

## Tools



Drill Sleeve (Screw-In)

| Size | Product Code |
|------|--------------|
| φ1.1 | 0200702011   |



Drill Sleeve (Locking)

| Size | Product Code |
|------|--------------|
| φ1.8 | 0200402018   |



Drill Sleeve (Neutral)

| Size      | Product Code |
|-----------|--------------|
| φ1.1/φ1.5 | 0200502001   |



Drill Sleeve (Compressed)

| Size | Product Code |
|------|--------------|
| φ1.1 | 0200602011   |



Drill Stop

| Size | Product Code |
|------|--------------|
| φ1.8 | 0200302018   |



| Product Name       | Product Code |
|--------------------|--------------|
| Drill Stop Spanner | 0200302101   |



Bending Iron

| Size      | Product Code |
|-----------|--------------|
| 5mm/6.5mm | 0200802001   |

# PRCL<sup>®</sup> - S



Bending Pliers For In-Plane Bending

| Size      | Product Code |
|-----------|--------------|
| 5mm/6.5mm | 0200902003   |



Bone Plate Cutter

| Size      | Product Code |
|-----------|--------------|
| 5mm/6.5mm | 0201002001   |



| Product Name  | Product Code |
|---------------|--------------|
| Screw Forceps | 0201202002   |



| Product Name       | Product Code |
|--------------------|--------------|
| Screwdriver Handle | 0201102012   |



Drill Bit (Quick Coupling)

| Size | Product Code |
|------|--------------|
| φ1.1 | 0200102011   |
| φ1.5 | 0200102015   |
| φ1.8 | 0200102018   |



Screwdriver (Quick Coupling)

| Size | Product Code |
|------|--------------|
| S    | 0201102002   |



Depth Gauge

| Size | Product Code |
|------|--------------|
| 40mm | 0201302041   |



Screw Holder

| Size      | Product Code |
|-----------|--------------|
| HC2.4/1.5 | 0207002415   |



Bending Iron For In-Plane (Optional)

| Size      | Product Code |
|-----------|--------------|
| 5mm/6.5mm | 0200902011   |



Multifunction Bone Plate Cutter

| Size                 | Product Code |
|----------------------|--------------|
| 5mm/6.5mm<br>8mm/9mm | 0201002004   |



Tray (Holds Implants)

| Size | Product Code |
|------|--------------|
| S    | 0202002001   |



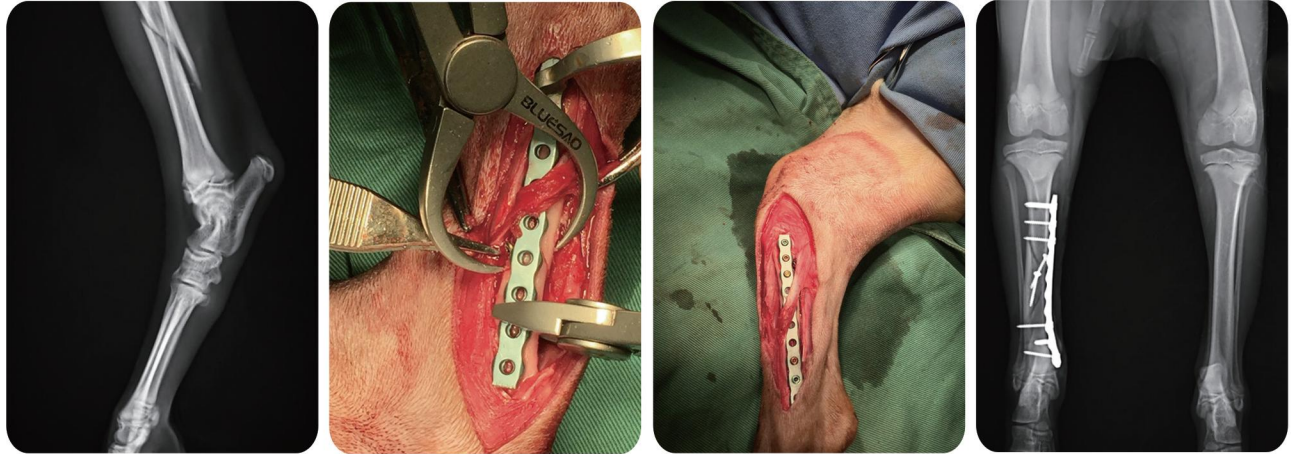
Instrument Container

| Size | Product Code |
|------|--------------|
| S    | 0202102002   |

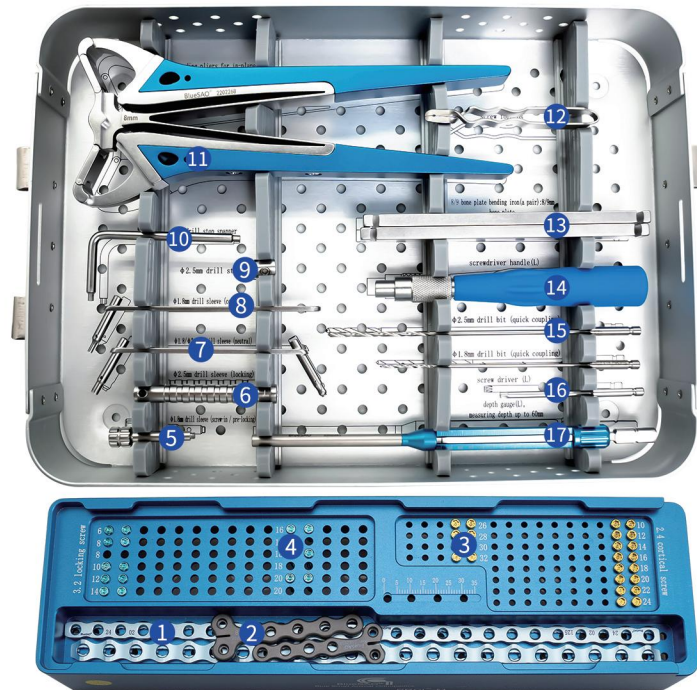
# PRCL<sup>®</sup> - S

## Clinical Case:

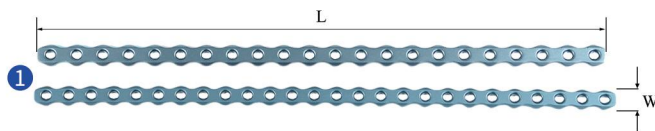
A poodle, 3kg, fell down from the building, which caused a oblique tibial fracture, fixed with PRCL-S locking plate.



# PRCL<sup>®</sup> - M

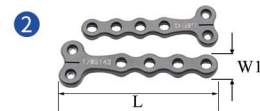


## Implants



1 Bone Plate Material: Titanium

| Width | Length | Number Of Holes | Product Code |
|-------|--------|-----------------|--------------|
| 8mm   | 234mm  | 26              | 0100100280   |
| 9mm   | 231mm  | 22              | 0100100290   |



2 T-Shaped Bone Plate Material: Titanium

| W1  | Length | Number Of Holes | Product Code |
|-----|--------|-----------------|--------------|
| 8mm | 51mm   | 6               | 0100100580   |
| 9mm | 59mm   | 6               | 0100100590   |

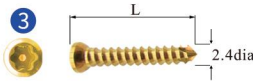


3 L Bone Plate Material: Titanium

| W1  | Length | Number Of Holes | Product Code (L) | Product Code (R) |
|-----|--------|-----------------|------------------|------------------|
| 8mm | 58.1mm | 7               | 0100100681       | 0100100682       |

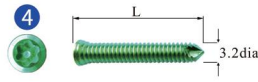
# PRCL<sup>®</sup> - M

## Implants



2.4mm Cortical Screw  
Material: Titanium Alloy

| Length | Product Code |
|--------|--------------|
| 10mm   | 0100201210   |
| 12mm   | 0100201212   |
| 14mm   | 0100201214   |
| 16mm   | 0100201216   |
| 18mm   | 0100201218   |
| 20mm   | 0100201220   |
| 22mm   | 0100201222   |
| 24mm   | 0100201224   |
| 26mm   | 0100201226   |
| 28mm   | 0100201228   |
| 30mm   | 0100201230   |
| 32mm   | 0100201232   |



3.2mm Locking Screw  
Material: Titanium Alloy

| Length | Product Code |
|--------|--------------|
| 6mm    | 0100301206   |
| 8mm    | 0100301208   |
| 10mm   | 0100301210   |
| 12mm   | 0100301212   |
| 14mm   | 0100301214   |
| 16mm   | 0100301216   |
| 18mm   | 0100301218   |
| 20mm   | 0100301220   |

## Tools



Drill Sleeve (Screw - In)

| Size | Product Code |
|------|--------------|
| φ1.8 | 0200702018   |



Drill Sleeve (Locking)

| Size | Product Code |
|------|--------------|
| φ2.5 | 0200402025   |



Drill Sleeve (Neutral)

| Size      | Product Code |
|-----------|--------------|
| φ1.8/φ2.5 | 0200502002   |



Drill Sleeve (Compressed)

| Size | Product Code |
|------|--------------|
| φ1.8 | 0200602018   |



Drill Stop

| Size | Product Code |
|------|--------------|
| φ2.5 | 0200302025   |



| Product Name       | Product Code |
|--------------------|--------------|
| Drill Stop Spanner | 0200302101   |



Bending Pliers For In - Plane Bending

| Size    | Product Code |
|---------|--------------|
| 8mm/9mm | 0200902004   |

# PRCL<sup>®</sup> - M



| Product Name  | Product Code |
|---------------|--------------|
| Screw Forceps | 0201202002   |



Drill Bit (Quick Coupling)

| Size | Product Code |
|------|--------------|
| φ1.8 | 0200102018   |
| φ2.5 | 0200102025   |



Screw Holder

| Size      | Product Code |
|-----------|--------------|
| HC3.2/2.4 | 0207003224   |



Tray (Holds Implants)

| Size | Product Code |
|------|--------------|
| M    | 0202002002   |



Bending Iron

| Size    | Product Code |
|---------|--------------|
| 8mm/9mm | 0200802002   |



Screwdriver (Quick Coupling)

| Size | Product Code |
|------|--------------|
| L    | 0201102003   |



Bending Iron For In - Plane (Optional)

| Size    | Product Code |
|---------|--------------|
| 8mm/9mm | 0200902012   |



| Product Name       | Product Code |
|--------------------|--------------|
| Screwdriver Handle | 0201102012   |



Depth Gauge

| Size | Product Code |
|------|--------------|
| 60mm | 0201302060   |



Multifunction Bone Plate Cutter

| Size      | Product Code |
|-----------|--------------|
| 8mm/9mm   | 0201002005   |
| 10mm/11mm |              |



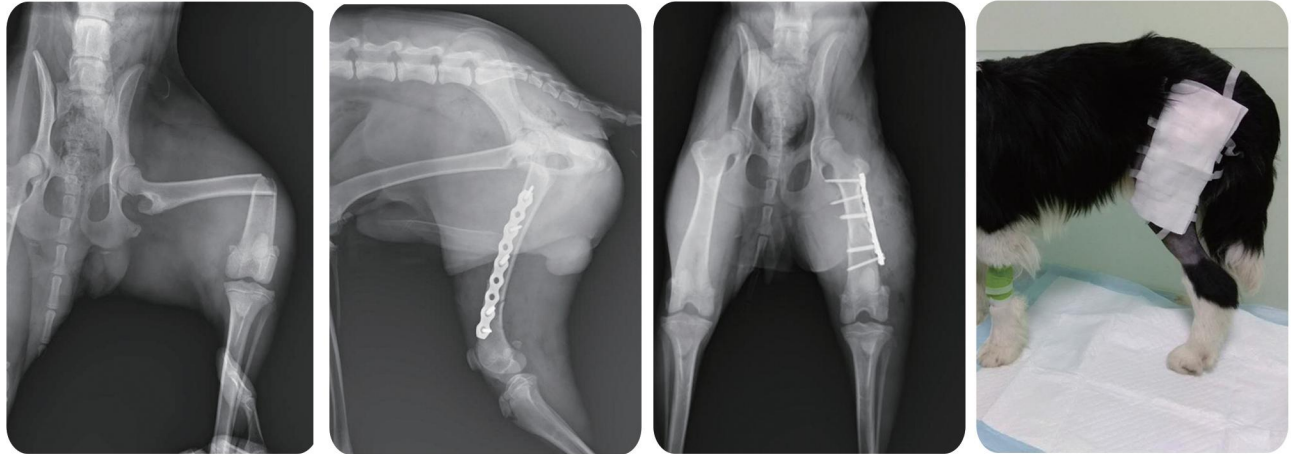
Instrument Container

| Size | Product Code |
|------|--------------|
| M    | 0202102003   |

# PRCL<sup>®</sup> - M

## Clinical Case:

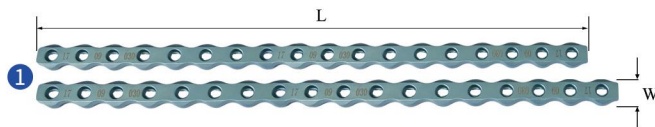
A Border collie, 10kg, suffered from a transverse fracture of femur, fixed with PRCL-M 9mm locking plate.



# PRCL<sup>®</sup> - L



## Implants



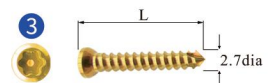
Bone Plate Material: Titanium

| Width | Length | Number Of Holes | Product Code |
|-------|--------|-----------------|--------------|
| 10mm  | 216mm  | 18              | 0100100310   |
| 11mm  | 234mm  | 18              | 0100100311   |



T - Shaped Bone Plate Material: Titanium

| W1   | Length | Number Of Holes | Product Code |
|------|--------|-----------------|--------------|
| 10mm | 67mm   | 6               | 0100100510   |
| 11mm | 73.5mm | 6               | 0100100511   |

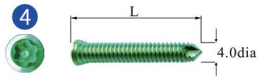


2.7mm Cortical Screw  
Material: Titanium Alloy

| Length | Product Code |
|--------|--------------|
| 12mm   | 0100201312   |
| 14mm   | 0100201314   |
| 16mm   | 0100201316   |
| 18mm   | 0100201318   |
| 20mm   | 0100201320   |
| 22mm   | 0100201322   |
| 24mm   | 0100201324   |
| 26mm   | 0100201326   |
| 28mm   | 0100201328   |
| 30mm   | 0100201330   |
| 32mm   | 0100201332   |
| 34mm   | 0100201334   |

# PRCL<sup>®</sup> - L

## Implants



4.0mm Locking Screw  
Material: Titanium Alloy

| Length | Product Code |
|--------|--------------|
| 10mm   | 0100301310   |
| 12mm   | 0100301312   |
| 14mm   | 0100301314   |
| 16mm   | 0100301316   |
| 18mm   | 0100301318   |
| 20mm   | 0100301320   |
| 22mm   | 0100301322   |
| 24mm   | 0100301324   |

## Tools



Drill Sleeve (Screw - In)

| Size | Product Code |
|------|--------------|
| φ2.0 | 0200702020   |



Drill Sleeve (Locking)

| Size | Product Code |
|------|--------------|
| φ3.2 | 0200402032   |



Drill Sleeve (Neutral)

| Size      | Product Code |
|-----------|--------------|
| φ2.0/φ2.7 | 0200502003   |



Drill Sleeve (Compressed)

| Size | Product Code |
|------|--------------|
| φ2.0 | 0200602020   |



| Product Name  | Product Code |
|---------------|--------------|
| Screw Forceps | 0201202002   |



Drill Stop

| Size | Product Code |
|------|--------------|
| φ3.2 | 0200302032   |



| Product Name       | Product Code |
|--------------------|--------------|
| Drill Stop Spanner | 0200302101   |



Bending Pliers For In - Plane Bending

| Size      | Product Code |
|-----------|--------------|
| 10mm/11mm | 0200902005   |



Bending Iron

| Size      | Product Code |
|-----------|--------------|
| 10mm/11mm | 0200802003   |

# PRCL<sup>®</sup> - L



| Product Name       | Product Code |
|--------------------|--------------|
| Screwdriver Handle | 0201102012   |



Drill Bit (Quick Coupling)

| Size | Product Code |
|------|--------------|
| φ2.0 | 0200102020   |
| φ2.7 | 0200102027   |
| φ3.2 | 0200102032   |



Screwdriver (Quick Coupling)

| Size | Product Code |
|------|--------------|
| L    | 0201102003   |



Screw Holder

| Size      | Product Code |
|-----------|--------------|
| HC4.0/2.7 | 0207004027   |



Depth Gauge

| Size | Product Code |
|------|--------------|
| 60mm | 0201302060   |



Multifunction Bone Plate Cutter

| Size                 | Product Code |
|----------------------|--------------|
| 8mm/9mm<br>10mm/11mm | 0201002005   |



Tray (Holds Implants)

| Size | Product Code |
|------|--------------|
| L    | 0202002003   |



Instrument Container

| Size | Product Code |
|------|--------------|
| L    | 0202102004   |

## Clinical Case:

A labrador, 17kg, suffered from a femoral comminuted fracture, fixed with PRCL - L 10mm locking plate.



# PRCL<sup>®</sup> System

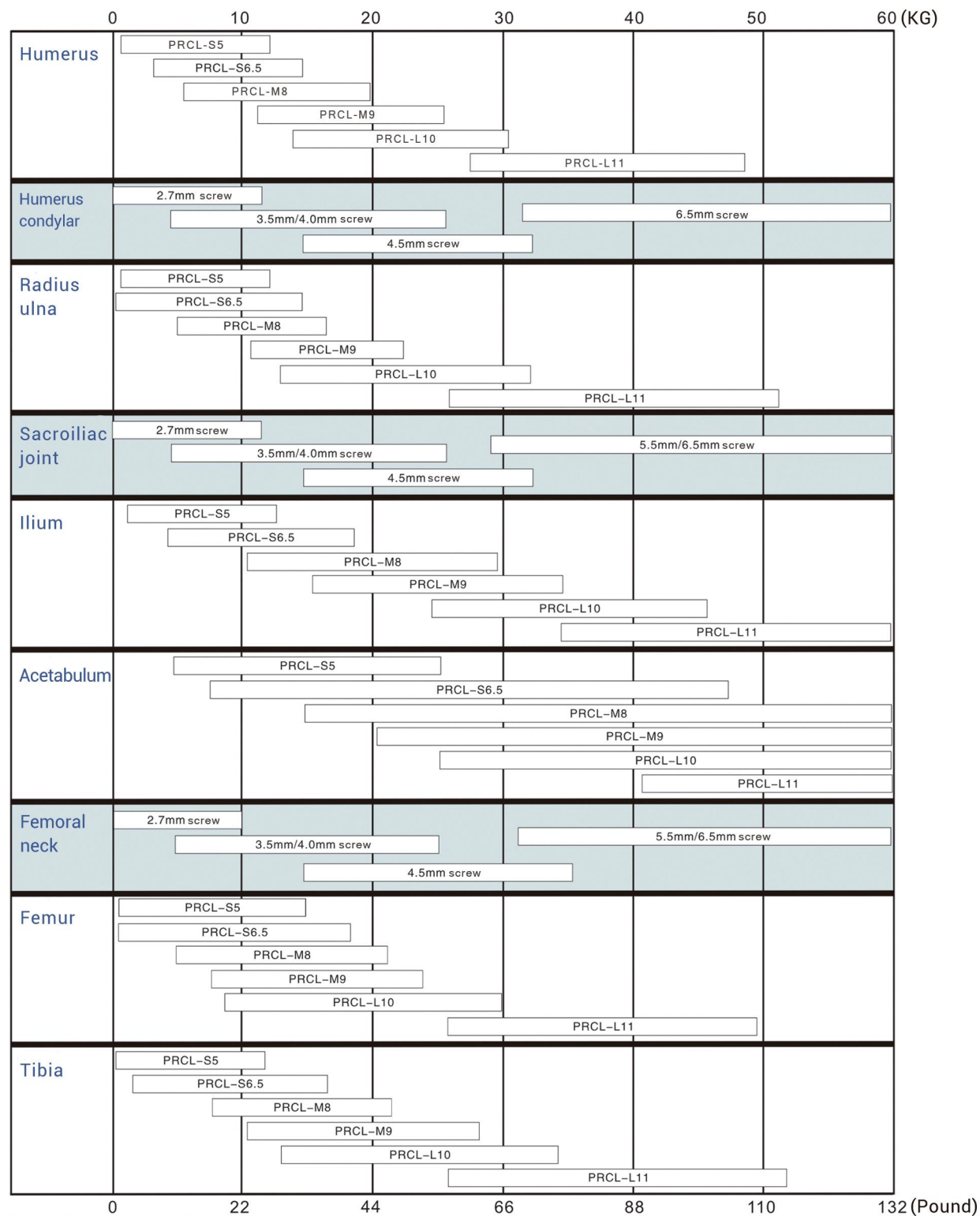
## Bone Plate, Screw, Drill Bit Reference Table

| Bone Plate     | PRCL-Mini                         |                                 | PRCL-S                           |                                  | PRCL-M                         |                                | PRCL-L                          |                                 |
|----------------|-----------------------------------|---------------------------------|----------------------------------|----------------------------------|--------------------------------|--------------------------------|---------------------------------|---------------------------------|
| Size           | W: 3.5mm<br>20 holes<br>L: 79.5mm | W: 4mm<br>20 holes<br>L: 89.5mm | W: 5mm<br>43 holes<br>L: 236.5mm | W: 6.5mm<br>34 holes<br>L: 238mm | W: 8mm<br>26 holes<br>L: 234mm | W: 9mm<br>22 holes<br>L: 231mm | W: 10mm<br>18 holes<br>L: 216mm | W: 11mm<br>18 holes<br>L: 234mm |
| Locking Screw  |                                   |                                 |                                  |                                  |                                |                                |                                 |                                 |
| Screw          | φ1.6mm                            |                                 | φ2.4mm                           |                                  | φ3.2mm                         |                                | φ4.0mm                          |                                 |
| Drill Bit      | φ1.1mm                            |                                 | φ1.8mm                           |                                  | φ2.5mm                         |                                | φ3.2mm                          |                                 |
| Cortical Screw |                                   |                                 |                                  |                                  |                                |                                |                                 |                                 |
| Screw          | φ1.0mm                            |                                 | φ1.5mm                           |                                  | φ2.4mm                         |                                | φ2.7mm                          |                                 |
| Drill Bit      | φ0.7mm                            |                                 | φ1.1mm                           |                                  | φ1.8mm                         |                                | φ2.0mm                          |                                 |

# PRCL<sup>®</sup> System

## Surgery Bone Plate Selected Reference Table

Patient Body Weight In Kilograms



Patient Body Weight In Pounds

**Note:** If The Animal Is Under 1.5 Kilograms, Please Choose PRCL - Mini.



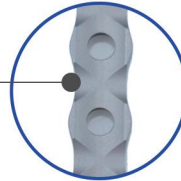
5.

# LCP Bone Plate System

# LCP Bone Plate System

## Low-contact

The bone plate adopts a low-contact design with the bone surface, optimizing the blood supply microenvironment of the bone surface and ensuring blood perfusion to the bone tissue.



Back of the Bone Plate

## Reconstruction

The bone plate can achieve three-dimensional shaping, including facial bending, lateral bending, and torsion.

## Locking

The bone plate hole features a threaded structure, allowing the screw cap to engage with the hole in a cap-lock locking mechanism.

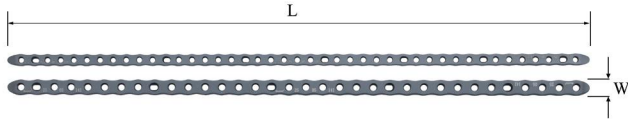
## Compression

The screw can achieve precise compression fixation of the fracture line through the compression hole of the bone plate.



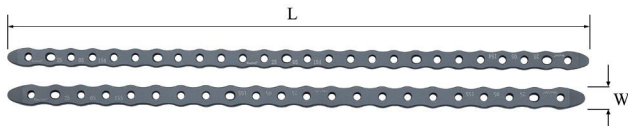
# LCP Bone Plate System

## Implants



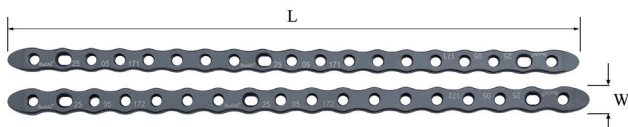
LCP Bone Plate Material: Titanium Alloy

| Width | Length | Number Of Holes | Product Code |
|-------|--------|-----------------|--------------|
| 5mm   | 243mm  | 43              | 2260310105   |
| 6.5mm | 242mm  | 34              | 2260310165   |



LCP Bone Plate Material: Titanium Alloy

| Width | Length | Number Of Holes | Product Code |
|-------|--------|-----------------|--------------|
| 8mm   | 243mm  | 26              | 2260310108   |
| 9mm   | 241mm  | 22              | 2260310109   |



LCP Bone Plate Material: Titanium Alloy

| Width | Length | Number Of Holes | Product Code |
|-------|--------|-----------------|--------------|
| 10mm  | 239mm  | 19              | 2260310110   |
| 11mm  | 243mm  | 18              | 2260310111   |



HL 2.4mm Locking Screw Material: Titanium Alloy

| Length | Product Code |
|--------|--------------|
| 8mm    | 2260222408   |
| 10mm   | 2260222410   |
| 12mm   | 2260222412   |
| 14mm   | 2260222414   |
| 16mm   | 2260222416   |
| 18mm   | 2260222418   |



2.0mm Compression Screw Material: Titanium Alloy

| Length | Product Code |
|--------|--------------|
| 10mm   | 2260332010   |
| 12mm   | 2260332012   |
| 14mm   | 2260332014   |
| 16mm   | 2260332016   |



HL 2.0mm Locking Screw Material: Titanium Alloy

| Length | Product Code |
|--------|--------------|
| 6mm    | 2260222006   |
| 8mm    | 2260222008   |
| 10mm   | 2260222010   |
| 12mm   | 2260222012   |
| 14mm   | 2260222014   |
| 16mm   | 2260222016   |



1.5mm Compression Screw Material: Titanium Alloy

| Length | Product Code |
|--------|--------------|
| 8mm    | 2260331508   |
| 10mm   | 2260331510   |
| 12mm   | 2260331512   |
| 14mm   | 2260331514   |



HL 2.7mm Locking Screw Material: Titanium Alloy

| Length | Product Code |
|--------|--------------|
| 10mm   | 2260222710   |
| 12mm   | 2260222712   |
| 14mm   | 2260222714   |
| 16mm   | 2260222716   |
| 18mm   | 2260222718   |
| 20mm   | 2260222720   |
| 22mm   | 2260222722   |
| 24mm   | 2260222724   |
| 26mm   | 2260222726   |

# LCP Bone Plate System

## Implants



**2.4mm Compression Screw**  
Material: Titanium Alloy

| Length | Product Code |
|--------|--------------|
| 12mm   | 2260332412   |
| 14mm   | 2260332414   |
| 16mm   | 2260332416   |
| 18mm   | 2260332418   |



**HL 4.0mm Locking Screw**  
Material: Titanium Alloy

| Length | Product Code |
|--------|--------------|
| 12mm   | 2260224012   |
| 14mm   | 2260224014   |
| 16mm   | 2260224016   |
| 18mm   | 2260224018   |
| 20mm   | 2260224020   |
| 22mm   | 2260224022   |
| 24mm   | 2260224024   |
| 26mm   | 2260224026   |
| 28mm   | 2260224028   |
| 30mm   | 2260224030   |



**3.5mm Compression Screw**  
Material: Titanium Alloy

| Length | Product Code |
|--------|--------------|
| 14mm   | 2260333514   |
| 16mm   | 2260333516   |
| 18mm   | 2260333518   |
| 20mm   | 2260333520   |

## Tools

**HL Drill Sleeve (Locking)**



| Size | Product Code |
|------|--------------|
| φ1.5 | 2260183615   |
| φ1.8 | 2500183618   |
| φ2.0 | 2500183620   |
| φ3.0 | 2500183630   |

**Drill Sleeve (Compressed)**



| Size | Product Code |
|------|--------------|
| φ1.1 | 2260183711   |
| φ1.5 | 2500183715   |
| φ1.8 | 2500183718   |
| φ2.5 | 2500183725   |



6.

# DPO Locking Plate System

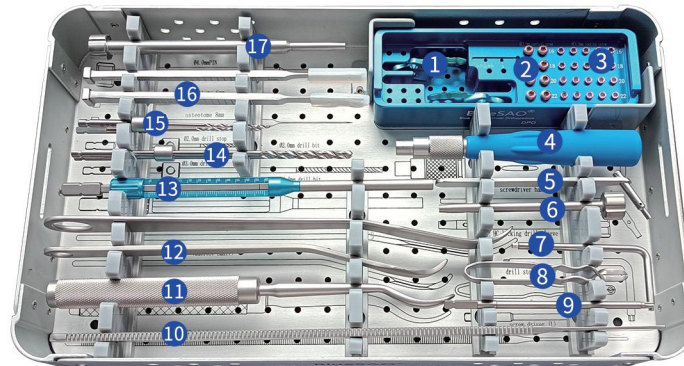
# DPO Locking Plate System

- **Imported pure titanium**  
offers excellent biocompatibility and safety, better than stainless steel, is the preferred material for implants.
- **High - precision engraving processing technology**  
ensures more uniform force distribution on the bone plate and makes it less to breakage.



Material: Titanium Alloy    Imported Pure Titanium  
Offers Excellent Biocompatibility

# DPO Locking Plate System



## Implants



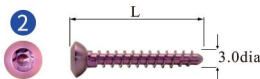
DPO Plate 25° (Left & Right)

| Size      | Product Code |
|-----------|--------------|
| 25° Left  | 0100100401   |
| 25° Right | 0100100402   |



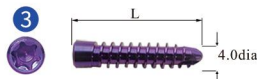
DPO Plate 30° (Left & Right)

| Size      | Product Code |
|-----------|--------------|
| 30° Left  | 0100100403   |
| 30° Right | 0100100404   |



3.0mm Cortical Screw  
Material: Titanium Alloy

| Length | Product Code |
|--------|--------------|
| 16mm   | 0100201416   |
| 18mm   | 0100201418   |
| 20mm   | 0100201420   |
| 22mm   | 0100201422   |



4.0mm HC Locking Screw  
Material: Titanium Alloy

| Length | Product Code |
|--------|--------------|
| 16mm   | 0100301416   |
| 18mm   | 0100301418   |
| 20mm   | 0100301420   |
| 22mm   | 0100301422   |

## Tools



Product Name Product Code  
Screwdriver Handle 0201102012



Drill Sleeve (Compressed)

| Size | Product Code |
|------|--------------|
| φ2.0 | 0200602020   |



HC Drill Sleeve (Locking)

| Size | Product Code |
|------|--------------|
| φ3.0 | 0200402130   |

# DPO Locking Plate System

## Tools



| Product Name       | Product Code |
|--------------------|--------------|
| Drill Stop Spanner | 0200302101   |



| Product Name  | Product Code |
|---------------|--------------|
| Screw Forceps | 0201202002   |



Screwdriver (Quick Coupling)

| Size | Product Code |
|------|--------------|
| RU15 | 0201102004   |



DPO Skid

| Size         | Product Code |
|--------------|--------------|
| 300mm × 20mm | 0205002003   |



Pubis Dissector

| Size  | Product Code |
|-------|--------------|
| 200mm | 0200502004   |



Bone Skid

| Size     | Product Code |
|----------|--------------|
| S: 205mm | 0205002001   |
| L: 245mm | 0205002002   |



Depth Gauge

| Size | Product Code |
|------|--------------|
| 60mm | 0201302060   |



Drill Bit (Quick Coupling)

| Size         | Product Code |
|--------------|--------------|
| φ2.0 × 100mm | 0200102020   |
| φ3.0 × 170mm | 0200102031   |



Drill Stop

| Size | Product Code |
|------|--------------|
| φ2.0 | 0200302220   |
| φ3.0 | 0200302221   |



Osteotome

| Size | Product Code |
|------|--------------|
| 6mm  | 0400102006   |
| 8mm  | 0400102008   |



PIN

| Size | Product Code |
|------|--------------|
| Φ4.0 | 0205002005   |



| Product Name | Product Code |
|--------------|--------------|
| Tray         | 0202002004   |

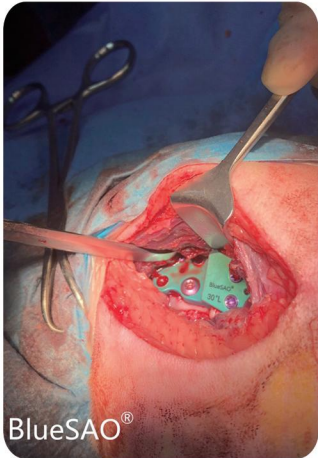
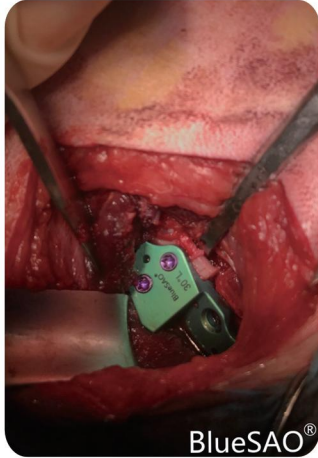
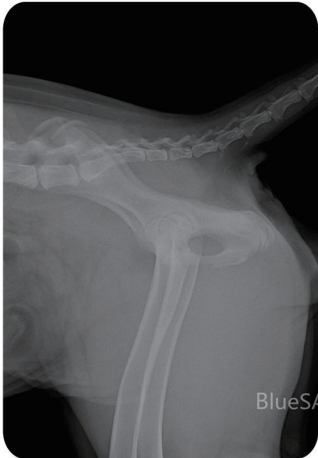
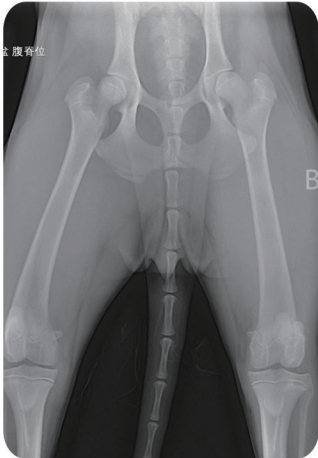


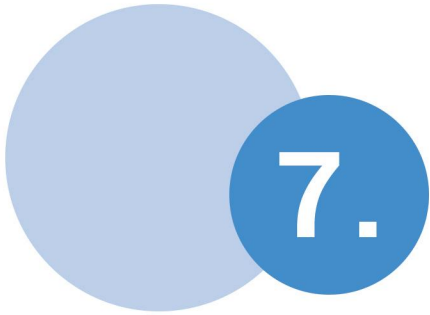
| Product Name         | Product Code |
|----------------------|--------------|
| Instrument Container | 0202102011   |

# DPO Locking Plate System

**Clinical Case:**

Samoyed dog, 15kg, bilateral hip dysplasia, the left side is more severe, fixed by DPO locking bone plate

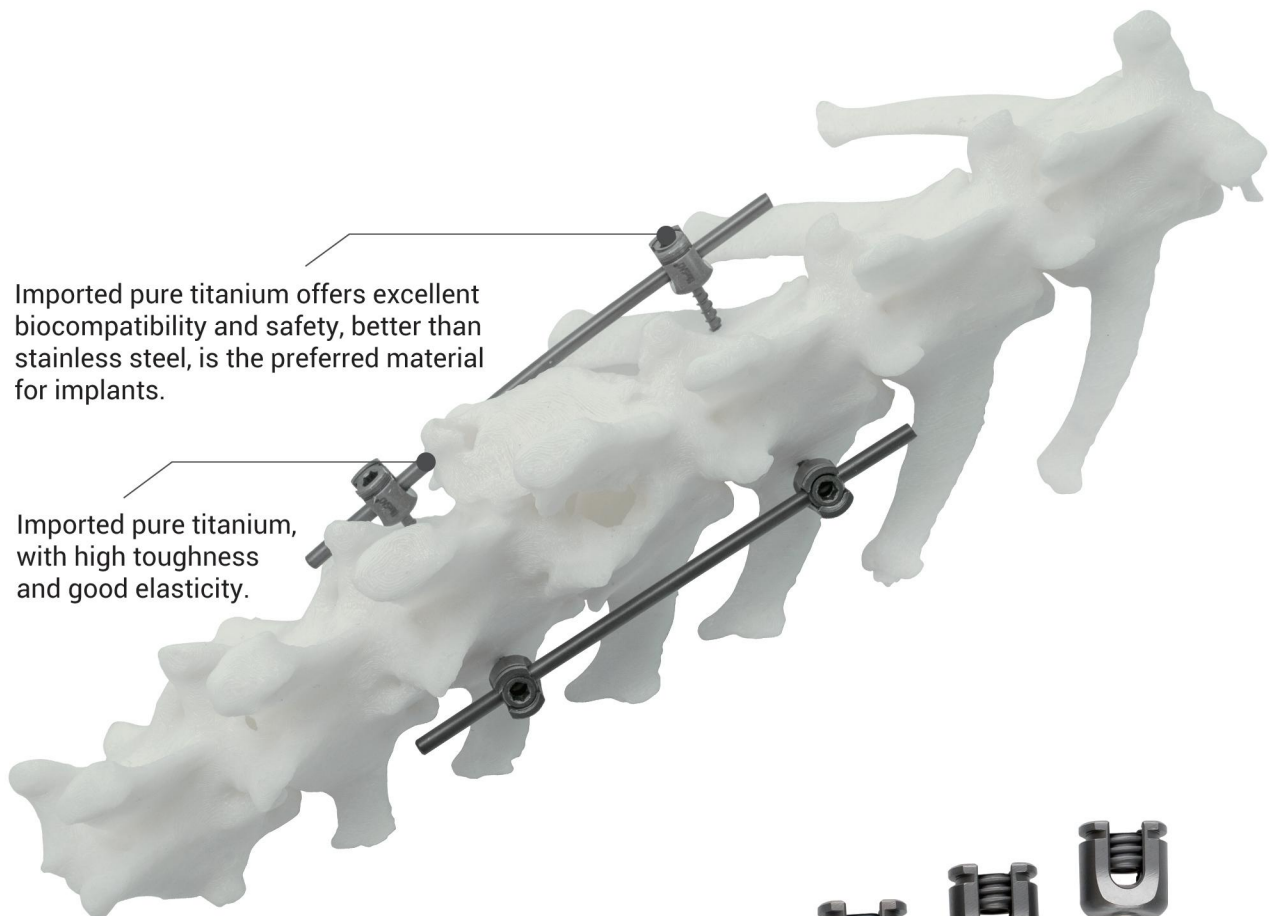




# **FIXPINE Pedicle Screw Fixation System**



# FIXPINE<sup>®</sup> -Pedicle Screw Fixation System



Imported pure titanium offers excellent biocompatibility and safety, better than stainless steel, is the preferred material for implants.

Imported pure titanium, with high toughness and good elasticity.



φ2.0

Unidirectional Pedicle Screw



φ2.5



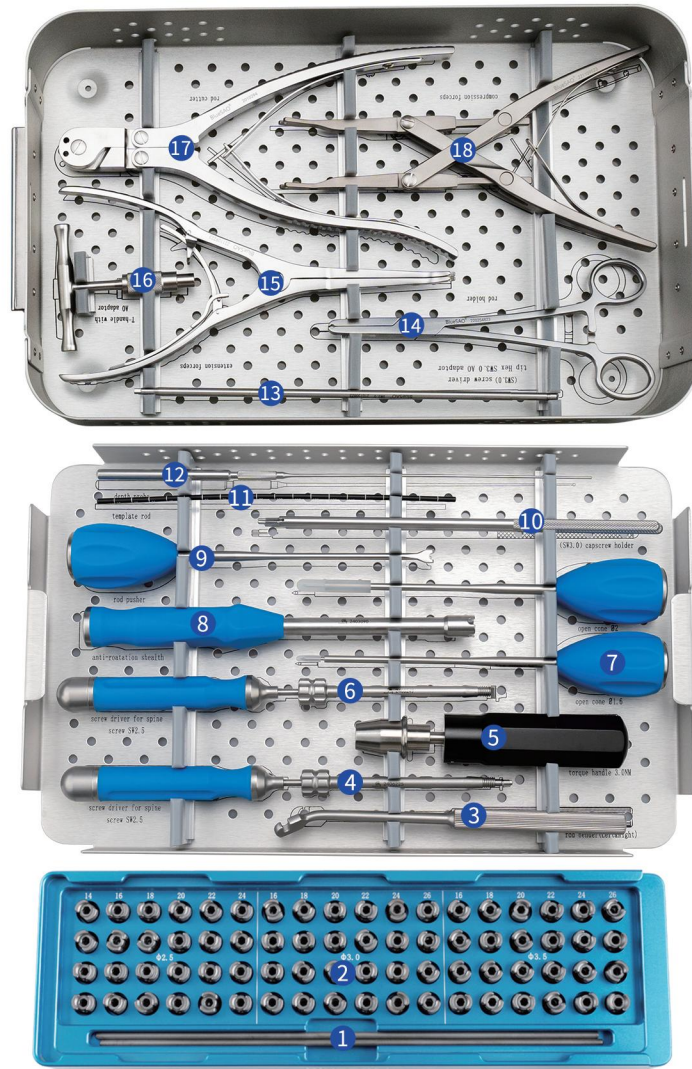
φ3.0



φ3.5

Multi-Directional Screw

# FIXPINE<sup>®</sup> -Pedicle Screw Fixation System



## Implants



Rod Material: Titanium

| Dia   | Length | Product Code |
|-------|--------|--------------|
| 2.5mm | 20cm   | 1500104001   |



2.0mm Unidirectional Pedicle Screw  
Material: Titanium

| Length | Product Code |
|--------|--------------|
| 8mm    | 1500102008   |
| 10mm   | 1500102010   |
| 12mm   | 1500102012   |

# FIXPINE<sup>®</sup> -Pedicle Screw Fixation System

## Implants



2.5mm Multi - Directional Screw  
Material: Titanium

| Length | Product Code |
|--------|--------------|
| 14mm   | 1500102514   |
| 16mm   | 1500102516   |
| 18mm   | 1500102518   |
| 20mm   | 1500102520   |
| 22mm   | 1500102522   |
| 24mm   | 1500102524   |



3.0mm Multi - Directional Screw  
Material: Titanium

| Length | Product Code |
|--------|--------------|
| 16mm   | 1500103016   |
| 18mm   | 1500103018   |
| 20mm   | 1500103020   |
| 22mm   | 1500103022   |
| 24mm   | 1500103024   |
| 26mm   | 1500103026   |



3.5mm Multi - Directional Screw  
Material: Titanium

| Length | Product Code |
|--------|--------------|
| 16mm   | 1500103516   |
| 18mm   | 1500103518   |
| 20mm   | 1500103520   |
| 22mm   | 1500103522   |
| 24mm   | 1500103524   |
| 26mm   | 1500103526   |

## Tools



Rod Bender

| Size  | Product Code |
|-------|--------------|
| Left  | 1500200003   |
| Right | 1500200004   |



Screw Driver For Spine

| Size  | Product Code |
|-------|--------------|
| SW2.5 | 1500200005   |



Torque Handle 3.5NM

| Size  | Product Code |
|-------|--------------|
| 3.0NM | 1500200015   |



Screw Driver For Spine

| Size  | Product Code |
|-------|--------------|
| SW2.0 | 1500200019   |



Open Cone

| Size  | Product Code |
|-------|--------------|
| SW1.6 | 1500200006   |
| SW2.0 | 1500200020   |



| Product Name            | Product Code |
|-------------------------|--------------|
| Anti - Roatation Sheath | 1500200007   |



| Product Name | Product Code |
|--------------|--------------|
| Rod Pusher   | 1500200013   |



| Product Name    | Product Code |
|-----------------|--------------|
| Capscrew Holder | 1500200002   |



| Product Name | Product Code |
|--------------|--------------|
| Template Rod | 1500200008   |

# FIXPINE<sup>®</sup> -Pedicle Screw Fixation System

## Tools



| Product Name | Product Code |
|--------------|--------------|
| Depth Probe  | 1500200016   |

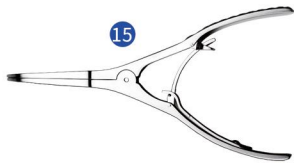


Screw Driver Tip Hex SW3.0  
AO Adaptor

| Size  | Product Code |
|-------|--------------|
| SW3.0 | 1500200001   |



| Product Name | Product Code |
|--------------|--------------|
| Rod Holder   | 1500200010   |



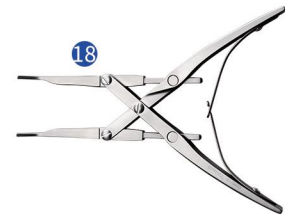
| Product Name      | Product Code |
|-------------------|--------------|
| Extension Forceps | 1500200011   |



| Product Name                  | Product Code |
|-------------------------------|--------------|
| T - Handle With<br>AO Adaptor | 0301602001   |



| Product Name | Product Code |
|--------------|--------------|
| Rod Cutter   | 1500200012   |



| Product Name        | Product Code |
|---------------------|--------------|
| Compression Forceps | 1500200014   |



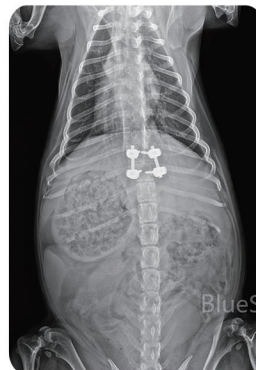
| Product Name          | Product Code |
|-----------------------|--------------|
| Tray (Holds Implants) | 1500200017   |



| Product Name         | Product Code |
|----------------------|--------------|
| Instrument Container | 1500200018   |

### Clinical Case:

A mixed-breed dog, 8 kg, with a T10-T11 intervertebral disc herniation, joint fixation was performed using the BlueSAO FIXPINE pedicle screw system.



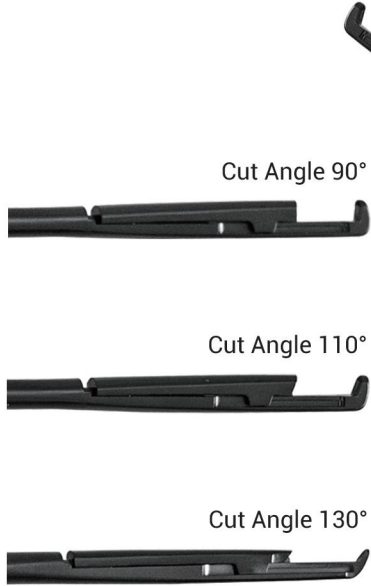


8.

## Rotating Laminectomy Rongeur



# DLC Coating Rotating Laminectomy Rongeur

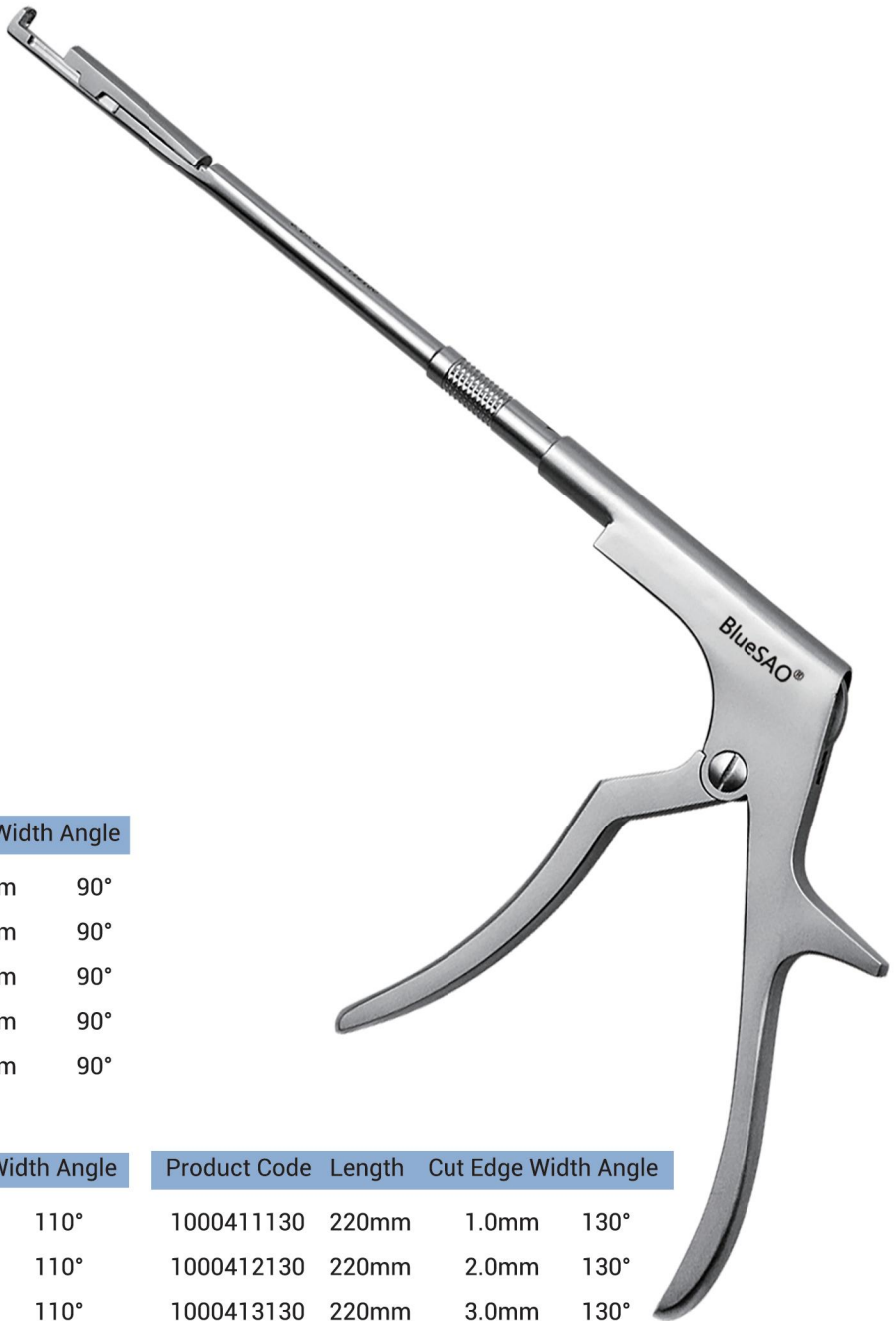


| Product Code | Length | Cut Edge Width | Angle |
|--------------|--------|----------------|-------|
| 1000811090   | 220mm  | 1.0mm          | 90°   |
| 1000812090   | 220mm  | 2.0mm          | 90°   |
| 1000813090   | 220mm  | 3.0mm          | 90°   |
| 1000814090   | 220mm  | 4.0mm          | 90°   |
| 1000815090   | 220mm  | 5.0mm          | 90°   |

| Product Code | Length | Cut Edge Width | Angle |
|--------------|--------|----------------|-------|
| 1000811110   | 220mm  | 1.0mm          | 110°  |
| 1000812110   | 220mm  | 2.0mm          | 110°  |
| 1000813110   | 220mm  | 3.0mm          | 110°  |
| 1000814110   | 220mm  | 4.0mm          | 110°  |
| 1000815110   | 220mm  | 5.0mm          | 110°  |

| Product Code | Length | Cut Edge Width | Angle |
|--------------|--------|----------------|-------|
| 1000811130   | 220mm  | 1.0mm          | 130°  |
| 1000812130   | 220mm  | 2.0mm          | 130°  |
| 1000813130   | 220mm  | 3.0mm          | 130°  |
| 1000814130   | 220mm  | 4.0mm          | 130°  |
| 1000815130   | 220mm  | 5.0mm          | 130°  |

# Rotating Laminectomy Rongeurs



| Product Code | Length | Cut Edge Width | Angle |
|--------------|--------|----------------|-------|
| 1000411090   | 220mm  | 1.0mm          | 90°   |
| 1000412090   | 220mm  | 2.0mm          | 90°   |
| 1000413090   | 220mm  | 3.0mm          | 90°   |
| 1000414090   | 220mm  | 4.0mm          | 90°   |
| 1000415090   | 220mm  | 5.0mm          | 90°   |

| Product Code | Length | Cut Edge Width | Angle |
|--------------|--------|----------------|-------|
| 1000411110   | 220mm  | 1.0mm          | 110°  |
| 1000412110   | 220mm  | 2.0mm          | 110°  |
| 1000413110   | 220mm  | 3.0mm          | 110°  |
| 1000414110   | 220mm  | 4.0mm          | 110°  |
| 1000415110   | 220mm  | 5.0mm          | 110°  |

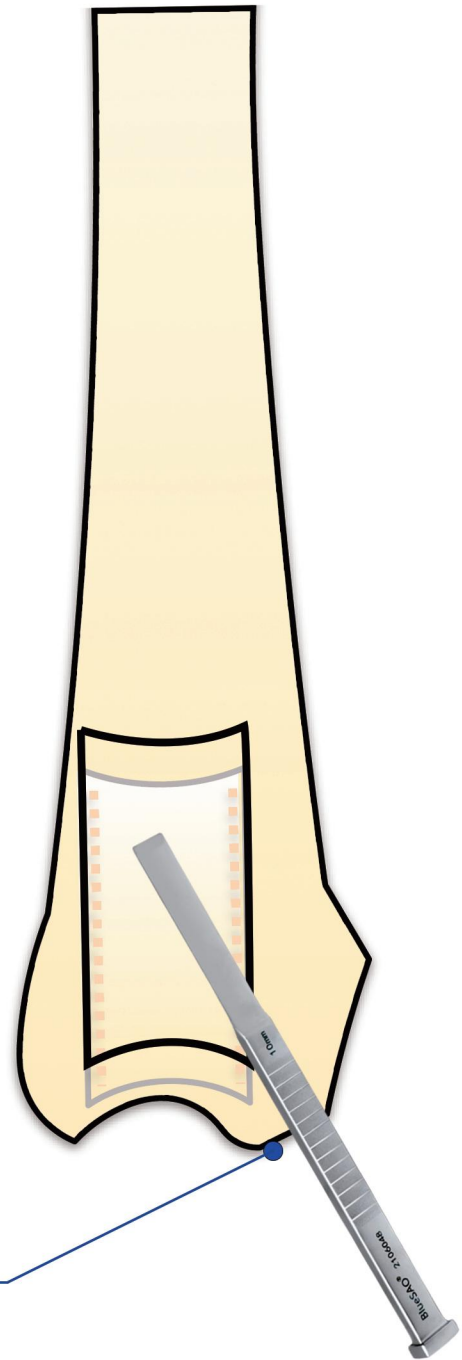
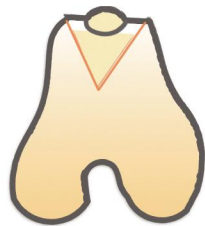
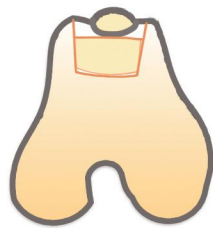
| Product Code | Length | Cut Edge Width | Angle |
|--------------|--------|----------------|-------|
| 1000411130   | 220mm  | 1.0mm          | 130°  |
| 1000412130   | 220mm  | 2.0mm          | 130°  |
| 1000413130   | 220mm  | 3.0mm          | 130°  |
| 1000414130   | 220mm  | 4.0mm          | 130°  |
| 1000415130   | 220mm  | 5.0mm          | 130°  |



9.

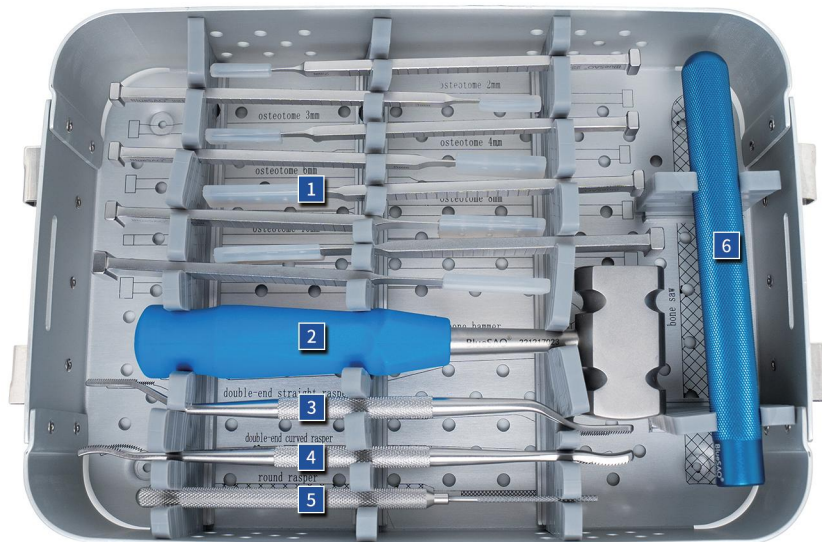
# Trochleoplasty Set

# Trochleoplasty Set



Osteotome

# Trochleoplasty Set



|          | Product Name       | Product Code |
|----------|--------------------|--------------|
| <b>1</b> | Osteotome (w:2mm)  | 0400102002   |
|          | Osteotome (w:3mm)  | 0400102003   |
|          | Osteotome (w:4mm)  | 0400102004   |
|          | Osteotome (w:5mm)  | 0400102005   |
|          | Osteotome (w:6mm)  | 0400102006   |
|          | Osteotome (w:8mm)  | 0400102008   |
|          | Osteotome (w:10mm) | 0400102010   |
|          | Osteotome (w:12mm) | 0400102012   |
|          | Osteotome (w:15mm) | 0400102015   |



|          | Product Name             | Product Code |
|----------|--------------------------|--------------|
| <b>4</b> | Rasper Double-end Curved | 0400402003   |



|          | Product Name | Product Code |
|----------|--------------|--------------|
| <b>5</b> | Round Rasper | 0400402001   |



|          | Product Name | Product Code |
|----------|--------------|--------------|
| <b>2</b> | Bone Hammer  | 0400202001   |



|          | Product Name | Product Code |
|----------|--------------|--------------|
| <b>6</b> | Bone Saw     | 0400302001   |



|          | Product Name               | Product Code |
|----------|----------------------------|--------------|
| <b>3</b> | Double-end Straight Rasper | 0400402002   |



10.

# Synthetic Ligament System

# Synthetic Ligament System



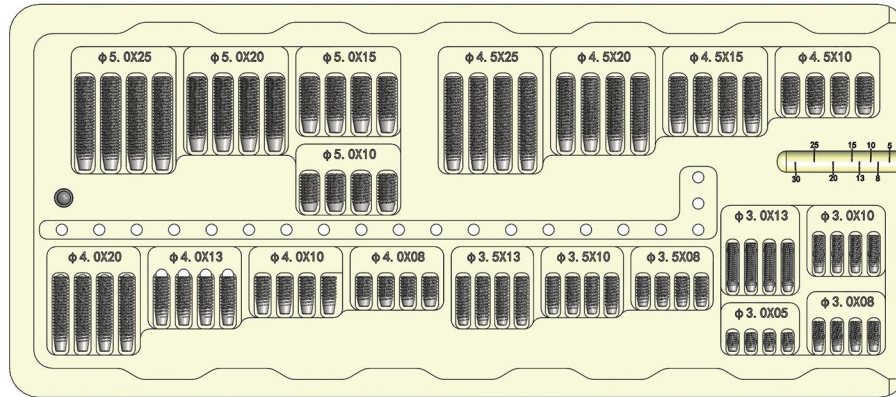
Unique synthetic ligament  
Features free intra-articular  
fibers that reproduce the  
natural movement and fu-  
nction of real ligaments.

Super-resistant polyethylene ligament  
Designed for the surgical repair and  
reconstruction of ligament and tendon  
tears.

Interfascia Screw  
Used for compressing and  
securing the ligament graft.

# Synthetic Ligament System

## Implants



### Interference Screw

| Size        | Product Code |
|-------------|--------------|
| φ3.0 * 5mm  | 2400050305   |
| φ3.0 * 8mm  | 2400050308   |
| φ3.0 * 10mm | 2400050310   |
| φ3.0 * 13mm | 2400050315   |
| φ3.5 * 8mm  | 2400053508   |
| φ3.5 * 10mm | 2400053510   |
| φ3.5 * 13mm | 2400053513   |
| φ4.0 * 8mm  | 2400050408   |
| φ4.0 * 10mm | 2400050410   |
| φ4.0 * 13mm | 2400050413   |
| φ4.0 * 20mm | 2400050420   |
| φ4.5 * 10mm | 2400054510   |
| φ4.5 * 15mm | 2400054515   |
| φ4.5 * 20mm | 2400054520   |
| φ4.5 * 25mm | 2400054525   |
| φ5.0 * 10mm | 2400050510   |
| φ5.0 * 15mm | 2400050515   |
| φ5.0 * 20mm | 2400050520   |
| φ5.0 * 25mm | 2400050525   |

# Synthetic Ligament System

## Implants



Knee Joint Ligament

| Size | Product Code |
|------|--------------|
| XS   | 240000001    |
| S    | 240000002    |
| M    | 240000003    |
| L1   | 240000004    |
| L2   | 240000005    |
| L3   | 240000006    |

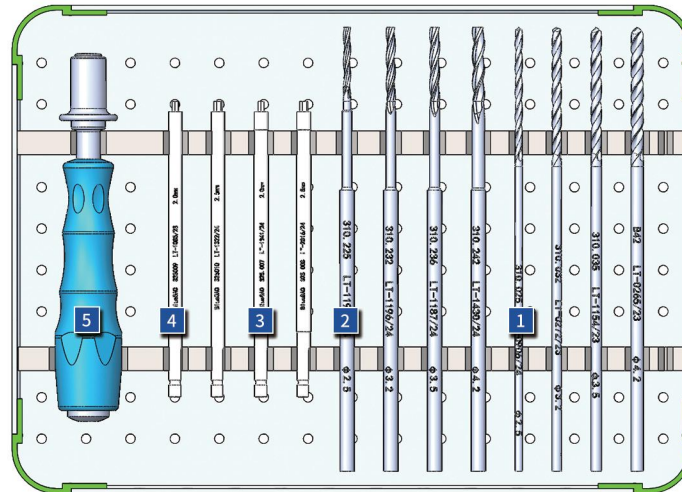


Round Ligament

| Size | Product Code |
|------|--------------|
| 25   | 240000007    |
| 35   | 240000008    |

# Synthetic Ligament System

## Tools



Non-cannulated Drill

| 1 | Size         | Product Code |
|---|--------------|--------------|
|   | Ø2.5 * 150mm | 2400020025   |
|   | Ø3.2 * 150mm | 2400019032   |
|   | Ø3.6 * 150mm | 2400021036   |
|   | Ø4.2 * 150mm | 2400018042   |



Hexagonal Screw

| 4 | Size  | Product Code |
|---|-------|--------------|
|   | SW2.0 | 2400003020   |
|   | SW2.5 | 2400004025   |



Cannulated Drill

| 2 | Size         | Product Code |
|---|--------------|--------------|
|   | Ø2.5 * 150mm | 2400020025   |
|   | Ø3.2 * 150mm | 2400019032   |
|   | Ø3.6 * 150mm | 2400021036   |
|   | Ø4.2 * 150mm | 2400018042   |



Screwdriver Handle

| 5 | Product Code |
|---|--------------|
|   | 2400607004   |



Cannulated Hexagonal Screw

| 3 | Size  | Product Code |
|---|-------|--------------|
|   | SW2.0 | 2400002020   |
|   | SW2.5 | 2400001025   |



11.

# MIO/MIPO Retractor



# MIO/MIPO Retractor



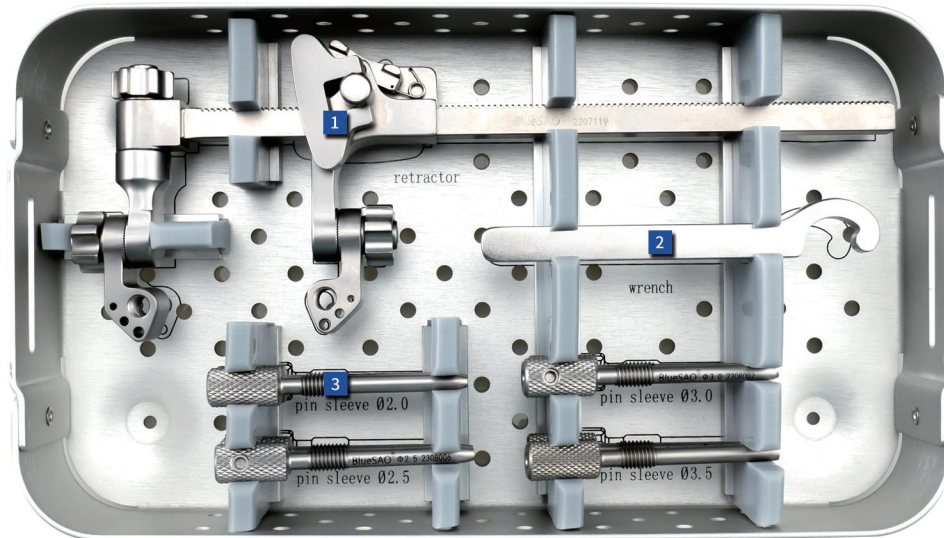
Control the opening and closing degree of both arms. rotate clockwise or counterclockwise to open or close, providing a continuous and controllable force



Adjust the lateral and longitudinal angles of the retractor arm. After reaching the ideal position, lock it, fix it and maintain the current pulled or reduction state to prevent accidental movement



# MIO/MIPO Retractor



|   | Product Name | Product Code |
|---|--------------|--------------|
| 1 | Retractor    | 1801000001   |



|   | Product Name                | Product Code |
|---|-----------------------------|--------------|
| 3 | Pin Sleeve (Diameter 2.0mm) | 1801000020   |
|   | Pin Sleeve (Diameter 2.5mm) | 1801000025   |
|   | Pin Sleeve (Diameter 3.0mm) | 1801000030   |
|   | Pin Sleeve (Diameter 3.5mm) | 1801111135   |



|   | Product Name | Product Code |
|---|--------------|--------------|
| 2 | Wrench       | 1801000002   |

# MIO/MIPO Retractor



Screwdriver Handle

| Product Code |
|--------------|
| 0201102012   |



Screwdriver (Quick Coupling)

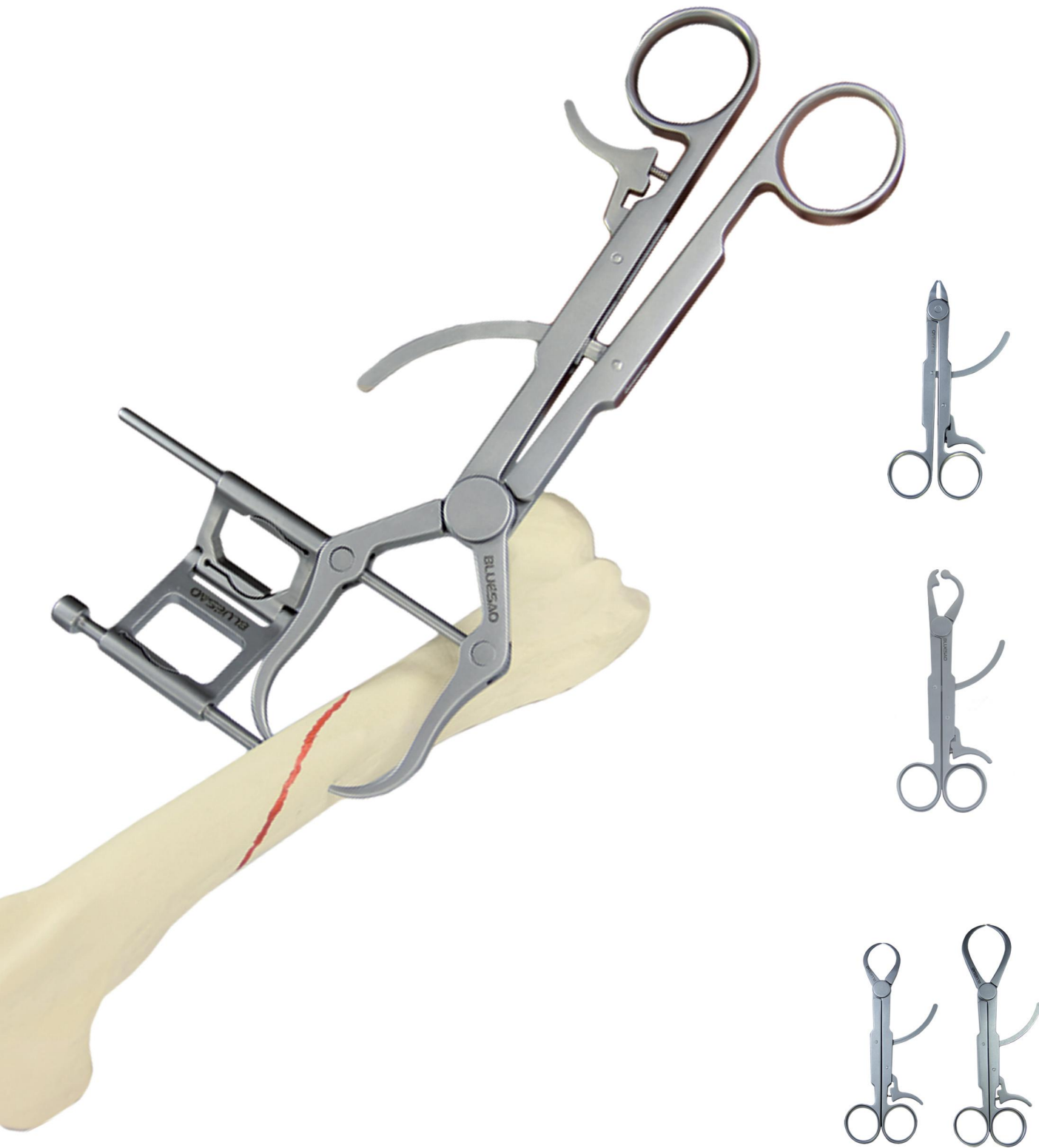
| Size | Product Code |
|------|--------------|
| L    | 0201102003   |



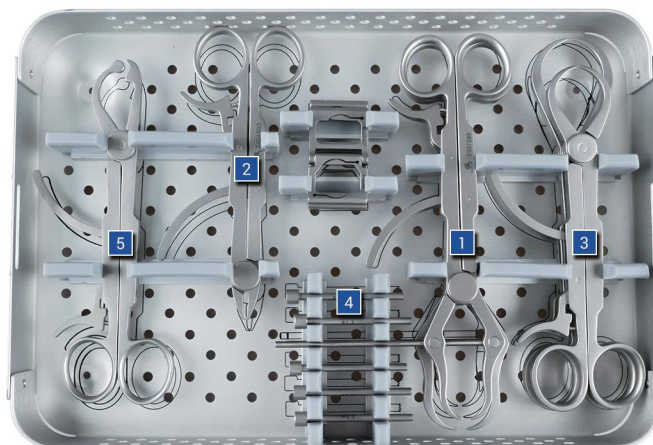
12.

# Stepless Adjustment Tools

# Stepless Adjustment Tools



# Stepless Adjustment Tools



|   | Product Name                    | Product Code |
|---|---------------------------------|--------------|
| 1 | AL Aiming Reduction Forceps (S) | 0301402004   |
|   | AL Aiming Reduction Forceps (L) | 0301402005   |



|   | Product name  | Product code |
|---|---|--------------|
| 4 | Drill Sleeve Of Aiming Reduction forceps (Diameter 1.1mm) | 0301402011   |
|   | Drill Sleeve Of Aiming Reduction Forceps (Diameter 1.5mm) | 0301402015   |
|   | Drill Sleeve Of Aiming Reduction Forceps (Diameter 1.8mm) | 0301402018   |
|   | Drill Sleeve Of Aiming Reduction Forceps (Diameter 2.0mm) | 0301402020   |
|   | Drill Sleeve Of Aiming Reduction Forceps (Diameter 2.5mm) | 0301402025   |



|   | Product Name                        | Product Code |
|---|-------------------------------------|--------------|
| 2 | AL Bone Holding Forceps (flat head) | 0301402006   |



|   | Product Name                         | Product Code |
|---|--------------------------------------|--------------|
| 5 | Bone Holding Forceps (embedded head) | 0301402003   |



|   | Product Name                     | Product Code |
|---|----------------------------------|--------------|
| 3 | AL Pointed Reduction Forceps (S) | 0301402001   |
|   | AL Pointed Reduction Forceps (L) | 0301402002   |

# Stepless Adjustment Tools



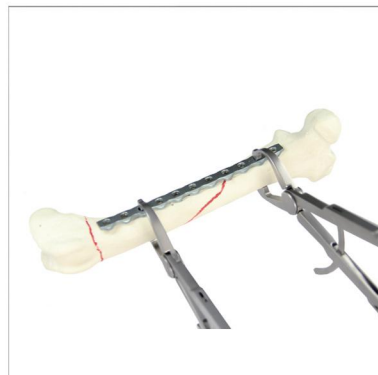
**AL Bone Holding Forceps (flat head)**

- Fix small plate.
- Mainpulate of fracture fragment to diseract and reduce.
- As a plastic forceps for PRCL-Mini locking plate system's bending jig for in-plane bending.



**AL Bone Holding Forceps (embedded head)**

- Adjust the bone plate position,use it to fix the to bone plate.
- The design of round bites can lock bone plate position accurately.
- Protect thread in plate hole.



**AL Pointed Reduction Forceps (S/L)**

- Reduce articular condyle fracture.
- Reduce oblique fracture .



**AL Aiming Reduction Forceps(S/L)**

- Use aiming instruments to do lag screws of oblique fracture.
- Use aiming instruments to do lag screws of joint.
- Reduce cruciate ligament: use aiming instruments to punch hole in joint capsule.





13.

# Orthopedic General Tools

# Orthopedic General Tools



Medical Wire



# Orthopedic General Tools

## Implants

### Stainless Steel Kirschner Wire, Single-end

| Diameter | Product Code |
|----------|--------------|
| 0.8mm    | 0102002108   |
| 1.0mm    | 0102002110   |
| 1.2mm    | 0102002112   |
| 1.5mm    | 0102002115   |
| 2.0mm    | 0102002120   |
| 2.5mm    | 0102002125   |
| 3.0mm    | 0102002130   |
| 3.5mm    | 0102002135   |

### Stainless Steel Kirschner Wire, Double-end

| Diameter | Product Code |
|----------|--------------|
| 0.8mm    | 0102002108   |
| 1.0mm    | 0102002110   |
| 1.2mm    | 0102002112   |
| 1.5mm    | 0102002115   |
| 2.0mm    | 0102002120   |
| 2.5mm    | 0102002125   |
| 3.0mm    | 0102002130   |
| 3.5mm    | 0102002135   |



### Medical Wire

| Diameter | Product Code |
|----------|--------------|
| 0.6mm    | 0103002006   |
| 0.8mm    | 0103002008   |
| 1.0mm    | 0103002010   |
| 1.2mm    | 0103002012   |

# Orthopedic General Tools

## Tools



Rongeur, Mix Articulation

| Size  | Product Code |
|-------|--------------|
| 180mm | 0300302010   |
| 220mm | 0300302011   |



Rongeur, Single Joint

| Size  | Product Code |
|-------|--------------|
| 155mm | 0300302001   |



Bone Holding Forceps

| Size  | Product Code |
|-------|--------------|
| 155mm | 0300102001   |
| 170mm | 0300102002   |
| 185mm | 0300102003   |



Automatic Centralized Bone Holding Forceps

| Size  | Product Code |
|-------|--------------|
| 150mm | 0300102011   |
| 190mm | 0300102012   |

# Orthopedic General Tools

## Tools



Reduction Forceps,  
Round Head With A Sharp

| Size  | Product Code |
|-------|--------------|
| 160mm | 0300202010   |



Reduction Forceps, Pointed-tip

| Size  | Product Code |
|-------|--------------|
| 160mm | 0300202001   |
| 195mm | 0300202002   |



Wire Cutter Oblique Jaw (Large)  
Diameter Of The Shear Wire  $\phi$ 1.2mm

| Size    | Product Code |
|---------|--------------|
| L=180mm | 0300402011   |



Wire Cutter, Mix Articulation

| Size       | Product Code |
|------------|--------------|
| $\phi$ 3.0 | 0800202017   |

# Orthopedic General Tools

## Tools



Rongeur, Mix Articulation

| Size    | Product Code |
|---------|--------------|
| L=250mm | 0300402013   |



Kirschner Wire Cutter

Shear Diameter  $\varphi$ 1.5mm,  $\varphi$ 2.0mm,  $\varphi$ 2.5mm

| Size    | Product Code |
|---------|--------------|
| L=205mm | 0301002001   |



Small Force Shear

Shear Needle Diameter  $\varphi$ 3.0mm

| Size    | Product Code |
|---------|--------------|
| L=350mm | 0300902001   |



Strong Shear

Shear Needle Diameter  $\varphi$ 6.0mm

| Size    | Product Code |
|---------|--------------|
| L=500mm | 0300902001   |

# Orthopedic General Tools

## Tools



Kern Bone Holding Forcep

| Size | Product Code |
|------|--------------|
| L    | 0300102020   |



Kern Bone Holding Forcep

| Size | Product Code |
|------|--------------|
| S    | 0300102021   |



Wire Cutter (Flat)

| Product Code |
|--------------|
| 0300102020   |



Kirschner Wire Rack

| Product Code |
|--------------|
| 0301002013   |

# Orthopedic General Tools

## Tools



Periosteal Dissector

| Size                        | Product Code |
|-----------------------------|--------------|
| 170mm, Cutting Edge 3mm     | 0300502002   |
| 170mm, Cutting Edge 6mm/8mm | 0300502003   |



Drag Hook

| Size            | Product Code |
|-----------------|--------------|
| 190mm, S:D=20mm | 0300602001   |
| 190mm, L:D=30mm | 0300602002   |



Bone Skid

| Size    | Product Code |
|---------|--------------|
| S:210mm | 0300702001   |
| L:240mm | 0300702002   |



Bone Finger Skid

| Size | Product Code |
|------|--------------|
| Mini | 0300702005   |
| S    | 0300702003   |
| M    | 0300702004   |



Hatt Spoon

| Size       | Product Code |
|------------|--------------|
| Mini:230mm | 1300101005   |
| S:230mm    | 1300101004   |
| L:230mm    | 1300101003   |



Hoffman Retractor

| Size    | Product Code |
|---------|--------------|
| S:100mm | 1300101001   |
| L:150mm | 1300101002   |

# Orthopedic General Tools

## Tools



Kirschner Wire Bender

| Size          | Product Code |
|---------------|--------------|
| φ1.2mm/φ1.5mm | 0301002011   |
| φ2.0mm/φ2.5mm | 0301002012   |



Tuberosity Skid

| Product Code |
|--------------|
| 1902090020   |



Tapping Cone  
Diameter Φ4.0mm

| Size    | Product Code |
|---------|--------------|
| L=248mm | 0301302001   |



Square Osteotome,  
Silica Gel Handle, Cutting Edge 15mm

| Size    | Product Code |
|---------|--------------|
| L=280mm | 0301702001   |



Nerve Root Stripper

| Size          | Product Code |
|---------------|--------------|
| Sharp Tip 3mm | 0302200003   |



Nerve Root Stripper

| Size          | Product Code |
|---------------|--------------|
| Round Tip 5mm | 0302200005   |

# Orthopedic General Tools

## Tools



Drill Bit

| Size | Product Code |
|------|--------------|
| Φ1.1 | 0200202011   |
| Φ1.5 | 0200202015   |
| Φ1.8 | 0200202018   |
| Φ2.0 | 0200202020   |
| Φ2.5 | 0200202025   |
| Φ2.7 | 0200202027   |
| Φ3.2 | 0200202032   |



Drill Bit (Quick Coupling)

| Size | Product Code |
|------|--------------|
| Φ0.7 | 0200102007   |
| Φ1.1 | 0200102011   |
| Φ1.3 | 0200102013   |
| Φ1.5 | 0200102015   |
| Φ1.8 | 0200102018   |
| Φ2.0 | 0200102020   |
| Φ2.4 | 0200102024   |
| Φ2.5 | 0200202025   |
| Φ2.7 | 0200102027   |
| Φ3.0 | 0200102030   |
| Φ3.2 | 0200102032   |



Gelpi Retractor

| Size      | Product Code |
|-----------|--------------|
| S:L=100mm | 0301202001   |
| M:L=150mm | 0301202002   |
| L:L=200mm | 0301202003   |



Screws Tap (Quick Coupling)

| Size | Product Code |
|------|--------------|
| Φ2.4 | 0208000024   |
| Φ3.2 | 0208000032   |
| Φ4.0 | 0208000040   |



Bone Mallet

| Product Code |
|--------------|
| 0400202001   |



Multifunctional Wire-scissors  
For Cutting Medical Wire No Big Than Φ0.8mm

| Size    | Product Code |
|---------|--------------|
| L=155mm | 0301102001   |

# Orthopedic General Tools

## Tools



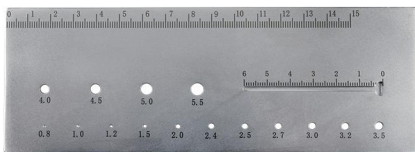
Wire Director

| Size | Product Code |
|------|--------------|
| L    | 0301102003   |



Wire Director

| Size | Product Code |
|------|--------------|
| S    | 0301102002   |



Measure The Length And Diameter Of Screws

| Product Code |
|--------------|
| 0300802001   |



Multifunctional Tie Wire Device (Dual Knobs)

| Size    | Product Code |
|---------|--------------|
| L=240mm | 0301102001   |



Rasper

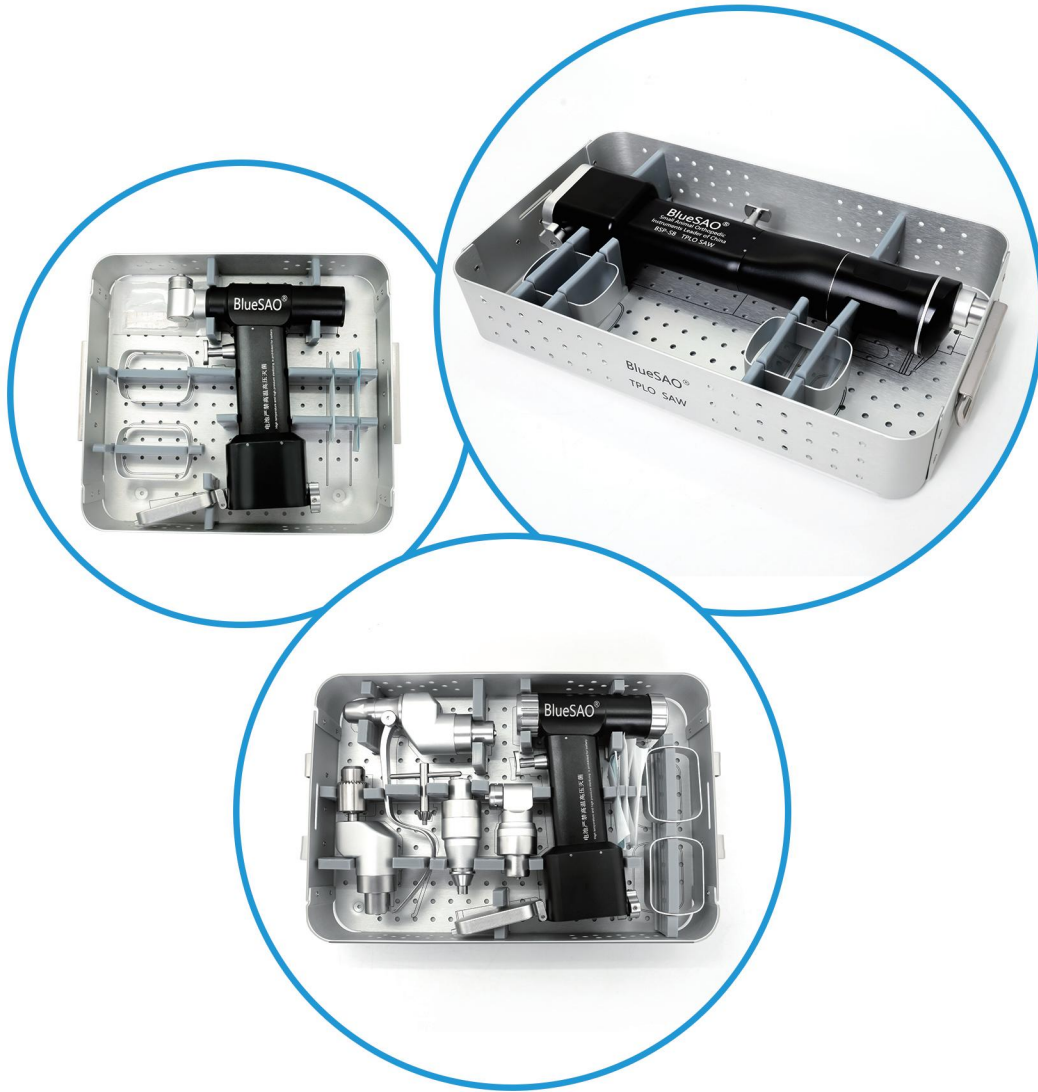
| Size | Product Code |
|------|--------------|
| 10mm | 02008100010  |
| 15mm | 02008100015  |
| 20mm | 02008100020  |
| 25mm | 02008100025  |
| 30mm | 02008100030  |



14.

# Power Tools





## Power Tools

# TPLO Saw



Product Name

Product Code

1 Handpiece

0500522001



Product Name

Sterilize Circle

2

# TPLO Saw

## Components



Product Name  
Charger (For Hollow Drill)



Product Name  
Ni-MH Battery



Product Name  
Locking Screw Nut



Product Name  
Locking Screw Driver



### Saw Blade

| Size | Product Code |
|------|--------------|
| R8   | 0501322001   |
| R10  | 0501322002   |
| R12  | 0501322003   |
| R15  | 0501322004   |
| R18  | 0501322005   |
| R21  | 0501322006   |
| R24  | 0501322007   |
| R27  | 0501322008   |
| R30  | 0501322009   |
| R33  | 0501322010   |

# Power Tools



## Hollow Drill (Large)

|              |              |                     |
|--------------|--------------|---------------------|
| Product Code | 0500322003   |                     |
| Accessories  | Handpiece ×1 | Jacob Chuck ×1      |
|              | Batteries ×2 | Keys ×1             |
|              | Recharger ×1 | Sterilizing Tray ×1 |



## Oscillating Saw (3 Saw Blades For Free)

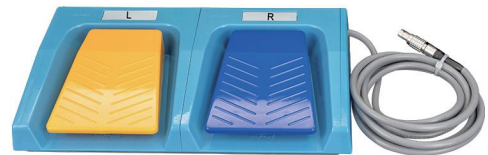
|              |              |                     |
|--------------|--------------|---------------------|
| Product Code | 0500222001   |                     |
| Accessories  | Handpiece ×1 | Saw Blades ×3       |
|              | Batteries ×2 | Sterilizing Tray ×1 |
|              | Recharger ×1 |                     |



## Multi-function Drill Saw

| Product Name              | Product Code        |                     |
|---------------------------|---------------------|---------------------|
| Multi-function Drill Host | 0500122001          |                     |
| Normal Drill Head         | 0500122002          |                     |
| Quick Coupling Drill Head | 0500122004          |                     |
| Oscillating Saw Head      | 0500122003          |                     |
| K-wire Head               | 0500122005          |                     |
| Accessories               | Handpiece ×1        | Connector           |
|                           | Batteries ×2        | Sterilizing Tray ×1 |
|                           | Recharger ×1        | Saw Blades ×3       |
|                           | Quick-changing ×1   | Key ×1              |
|                           | Common Connector ×1 |                     |

# BSP-M200 High Speed Electrical Saw Drill



|   |              |      |
|---|--------------|------|
| 1 | Product Name | Host |
|   |              |      |

|   |              |              |              |            |
|---|--------------|--------------|--------------|------------|
| 4 | Product Name | Pedal Switch | Product Code | 0203200009 |
|   |              |              |              |            |



|   |              |              |              |            |
|---|--------------|--------------|--------------|------------|
| 2 | Product Name | Handle Wires | Product Code | 0304200077 |
|   |              |              |              |            |



|   |              |                   |              |            |
|---|--------------|-------------------|--------------|------------|
| 5 | Product Name | Sterilization Box | Product Code | 0304200037 |
|   |              |                   |              |            |



|   |              |            |              |            |
|---|--------------|------------|--------------|------------|
| 3 | Product Name | Power Cord | Product Code | 0316220008 |
|   |              |            |              |            |

# BSP-M200 High Speed Electrical Saw Drill



|   | Product Name | Product Code |
|---|--------------|--------------|
| 6 | Handpiece    | 0203200011   |



|   | Product Name  | Product Code |
|---|---------------|--------------|
| 7 | Straight Head | 0304200079   |



|   | Product Name | Product Code |
|---|--------------|--------------|
| 8 | Angled Head  | 0304200080   |



|   | Product Name       | Product Code |
|---|--------------------|--------------|
| 9 | Sagittale Saw Head | 0304200081   |



|    | Product Name             | Product Code |
|----|--------------------------|--------------|
| 10 | Diamond Burs (φ1.0 * 70) | 0304200056   |
|    | Diamond Burs (φ2.0 * 70) | 0304200057   |
|    | Diamond Burs (φ3.0 * 70) | 0304200004   |
|    | Diamond Burs (φ4.0 * 70) | 0304200036   |
|    | Diamond Burs (φ5.0 * 70) | 0304200005   |



|    | Product Name             | Product Code |
|----|--------------------------|--------------|
| 11 | Cutting Burs (φ1.0 * 70) | 0304200058   |
|    | Cutting Burs (φ2.0 * 70) | 0304200068   |
|    | Cutting Burs (φ3.0 * 70) | 0304200001   |
|    | Cutting Burs (φ4.0 * 70) | 0304200002   |
|    | Cutting Burs (φ5.0 * 70) | 0304200003   |



|    | Product Name              | Product Code |
|----|---------------------------|--------------|
| 12 | Saw Blades (20 * 7 * 0.5) | 0304200066   |
|    | Saw Blades (31 * 9 * 0.5) | 0304200067   |



15.

# Plastic Bone Model

# Plastic Bone Model



| Product Name  | Product Code |
|---------------|--------------|
| Femur (Large) | 0900223001   |



| Product Name  | Product Code |
|---------------|--------------|
| Femur (Small) | 0900223007   |



| Product Name | Product Code |
|--------------|--------------|
| Humerus      | 0900223002   |



| Product Name | Product Code |
|--------------|--------------|
| Tibia-fibula | 0900223005   |



| Product Name   | Product Code |
|----------------|--------------|
| Radius (Large) | 0900223003   |



| Product Name   | Product Code |
|----------------|--------------|
| Radius (Small) | 0900223008   |



| Product Name | Product Code |
|--------------|--------------|
| Knee Joint   | 0900313001   |



| Product Name | Product Code |
|--------------|--------------|
| Spine        | 0900223014   |



| Product Name | Product Code |
|--------------|--------------|
| Pelvis       | 0900223006   |



16.

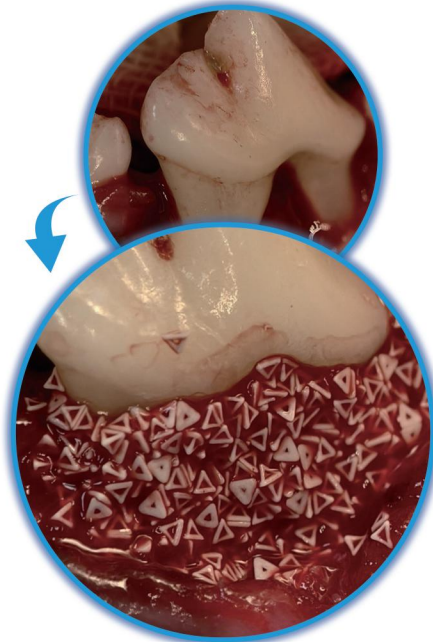
## 3D-Printed Synthetic Bone Graft

# 3D-Printed Synthetic Bone Graft



- **Porous structure**  
Spatial tetrahedral granule stacking
- **Connected channels**  
3D design of microstructure
- **Blood penetration**  
Fluid mechanics-guided vascularization
- **Gradual bone regeneration**  
Stable osteogenic space

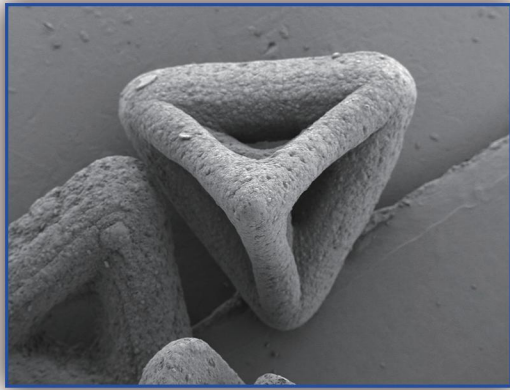
- **Guiding Vasculature**
- **Stable Filling**
- **Efficient Regeneration**



Invention Patent  
ZL 202010950983.0

National Natural Science Foundation of China Project  
No.12072055

## Product Form:



Morphology under  
electron microscope



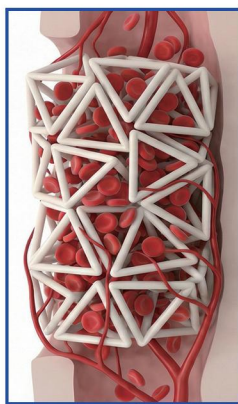
Actual product form

## Working Mechanism:

Through **designable** microscopic geometric configurations, the granules, after stacking:

- Spontaneously form a stable osteogenic space
- Inter-granule pores maintain high connectivity
- Blood is quickly guided and retained along specific structures
- Provide an ideal environment for osteoblasts and angiogenesis

### (Mechanism of Action Schematic)



**Immediate Implantation**  
Granules fill the defect  
Rapidly absorb and guide blood



**Early Implantation**  
Blood vessels ingrowth  
New bone grows along



**Late Implantation**  
Material gradually degrades/integrates  
Forms stable new bone tissue

# BlueSAO-3D Particles

## Application Scenarios:



### Orthopedic Diseases:

- Defect repair after osteotomy
- Arthrodesis (Joint fusion)
- Metaphyseal bone defect repair & reconstruction
- Non-union/delayed union
- Defect repair after fracture
- Filling of sites after cyst or tumor excision
- Tibial Tuberosity Advancement (TTA)
- Other sites requiring the use of bone grafts.....



### Oral Diseases:

- Alveolar bone defect
- Extraction socket site preservation
- Other sites requiring the use of bone grafts .....
- Periodontal bone tissue defect caused by periodontitis
- Maxillofacial bone defect

## Product advantages:

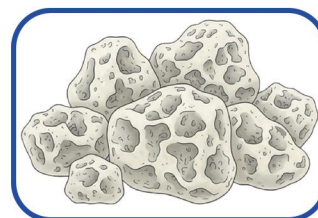
### BlueSAO-3D Granules



- ✓ More stable filling morphology
- ✓ Faster vascular guidance
- ✓ Controllable mechanical environment
- ✓ Exclusion of immune and disease transmission risks

### Traditional Bone Graft Granules

- X Random and uncontrollable morphology and structure
- X Poor blood affinity and flow guidance
- X Lack of biomechanical adaptability
- X Potential risks of immunity and disease transmission

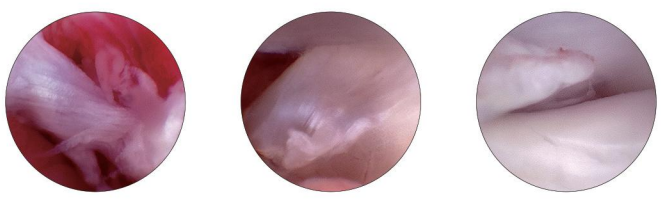







17.

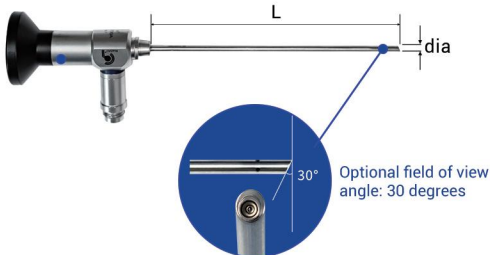
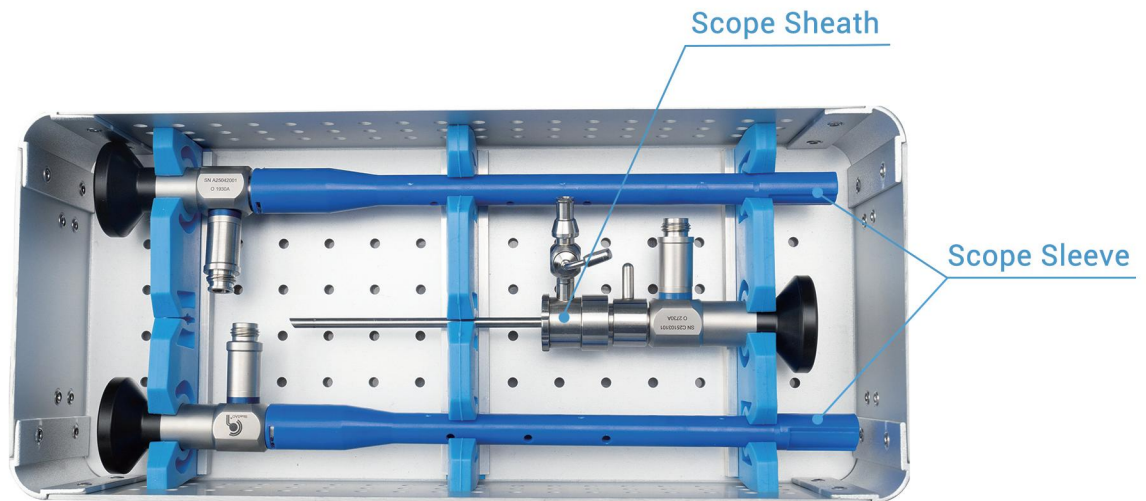
# Veterinary Arthroscopy System

# Veterinary Arthroscopy System



-  Ultra-clear imaging — every detail in perfect view
-  Intuitive and user-friendly operation
-  Precision engineering with meticulous attention to detail

# • Scope and Scope Sheath



## Scope

| Size   | Length | Product Code |
|--------|--------|--------------|
| φ1.9mm | 68mm   | 03.18.300010 |
| φ2.4mm | 110mm  | 03.18.300012 |
| φ2.7mm | 110mm  | 03.18.300014 |



## Scope Sheath

| Size   | compatible lens | Product Code |
|--------|-----------------|--------------|
| φ2.5mm | φ1.9mm          | 03.18.300011 |
| φ3.2mm | φ2.4mm          | 03.18.300013 |
| φ3.5mm | φ2.7mm          | 03.18.300015 |

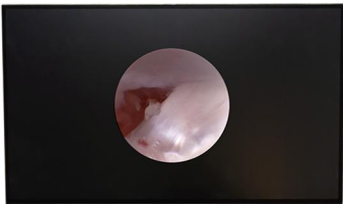


| Product Name                          | Product Code |
|---------------------------------------|--------------|
| Arthroscopy lens instrument Container | 03.18.300018 |

# • 4K Camera System



| Product Name     | Product Code |
|------------------|--------------|
| 4K Camera System | 01.300007    |



| Product Name    | Product Code | Display Pixel |
|-----------------|--------------|---------------|
| 32 Inch Monitor | 03.18.300001 | 4K            |



| Product Name       | Product Code |
|--------------------|--------------|
| Light Guide Bundle | 03.18.300008 |

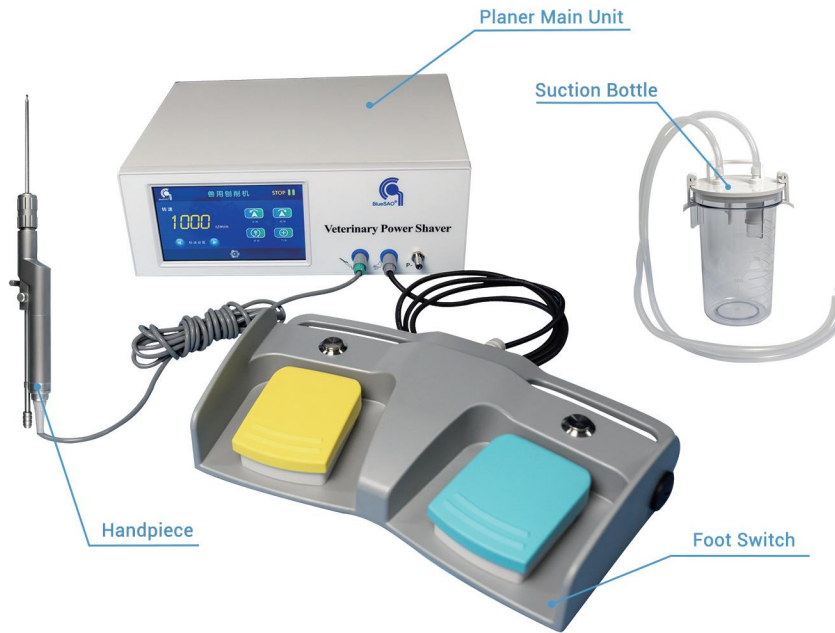


| Product Name | Product Code |
|--------------|--------------|
| Lens Handle  | 03.18.300006 |



| Product Name        | Product Code |
|---------------------|--------------|
| Arthroscopy Trolley | 03.18.300002 |

# • Veterinary Power Shaver



## Power parameters

- No-load rotational speed of planing head 4000RPM±15%
- Host power supply voltage 110/220V 50/60HZ
- Idling noise ≤65dB(A)
- Rated power of the host 35W



| Product Name      | Product Code |
|-------------------|--------------|
| Power Shaver Host | 01.300004    |



| Product Name | Product Code |
|--------------|--------------|
| Handpiece    | 03.18.100038 |



### Shaver Burs

| Size   | Product Code |
|--------|--------------|
| φ2.5mm | 03.18.100016 |
| φ3.5mm | 03.18.100017 |



| Product Name   | Product Code |
|----------------|--------------|
| Suction Bottle | 03.18.100026 |



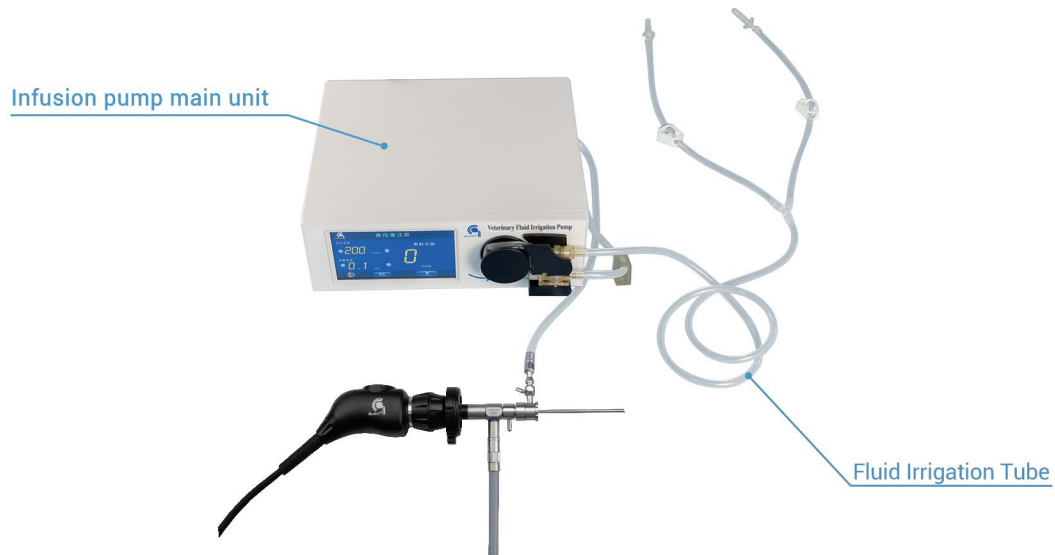
| Product Name | Product Code |
|--------------|--------------|
| Foot Switch  | 03.18.100002 |



### Shaver Blades

| Size   | Product Code |
|--------|--------------|
| φ2.0mm | 03.18.100018 |
| φ3.0mm | 03.18.100019 |
| φ4.0mm | 03.18.100020 |

# • Veterinary Fluid Irrigation Pump



| Product Name          | Product Code |
|-----------------------|--------------|
| Fluid Irrigation Pump | 01.300005    |

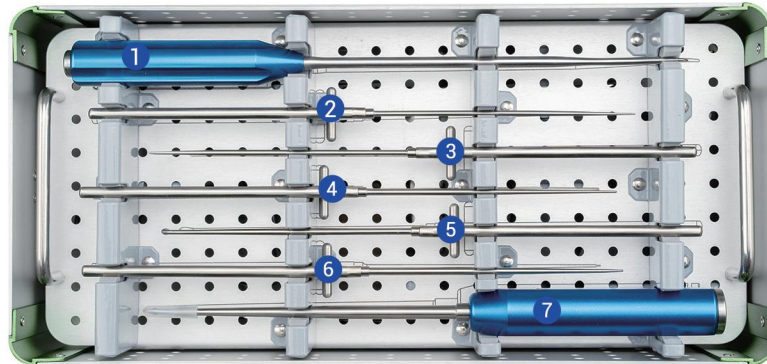


| Product Name          | Product Code |
|-----------------------|--------------|
| Fluid Irrigation Tube | 03.18.200007 |

## Peculiarity:

1. Precise infusion control: It can precisely control the flow rate and pressure of the liquid, ensuring clear surgical vision and Sufficient operating space;
2. Intelligent operation: Touch screen settings, easy to set parameters and monitor the process, automatic detection of infusion chamberInternal pressure;
3. Driven by a stepper motor, it operates smoothly with minimal noise.

# • Arthroscopy Basic Instrument Set (upper layer)



Bone Awl

| 1 | Length | Angle | Product Code |
|---|--------|-------|--------------|
|   | 240mm  | 20°   | 1306020191   |



Meniscal Push Knife

| 2 | Length ×Width | Product Code |
|---|---------------|--------------|
|   | 140×2.5mm     | 1300062902   |



Meniscal Hook Knife

| 3 | Length ×Width | Reverse | Product Code |
|---|---------------|---------|--------------|
|   | 140×2.5mm     | 90°     | 1300062901   |



Probe

| 4 | Length | Hook Deep | Product Code |
|---|--------|-----------|--------------|
|   | 230mm  | 3.0mm     | 1360803002   |



Small Curette

| 5 | Length ×Width | Product Code |
|---|---------------|--------------|
|   | 230×3.0mm     | 1360803011   |



Probe

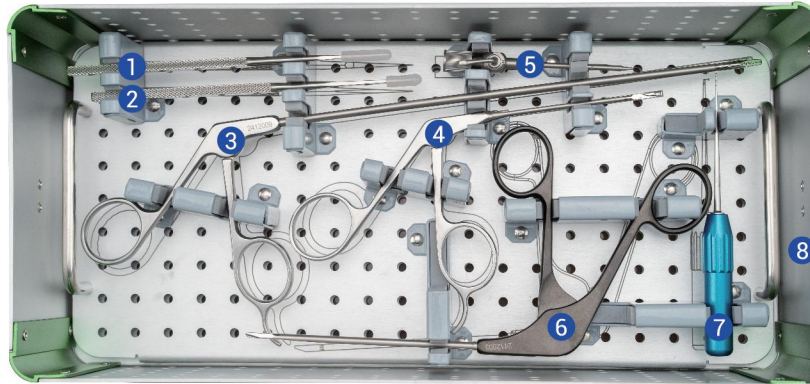
| 6 | Length | Hook Deep | Product Code |
|---|--------|-----------|--------------|
|   | 230mm  | 5.0mm     | 1360803003   |



Ventura Stifle Thrust Lever

| 7 | Size | Product Code |
|---|------|--------------|
|   | L    | 1300062903   |

# • Arthroscopy Basic Instrument Set (base layer)



Bone knife

| 1 | Length xWidth | Product Code |
|---|---------------|--------------|
|   | 140x2.0mm     | 1306110081   |



Bone knife

| 2 | Length xWidth | Product Code |
|---|---------------|--------------|
|   | 140x4.0mm     | 1306110084   |



Grasper Forceps (Crocodile Teeth)

| 3 | Length xWidth | Product Code |
|---|---------------|--------------|
|   | 215x4.5mm     | 1300609040   |
|   | 65x2.5mm      | 1300611019   |

# • Arthroscopy Basic Instrument Set (base layer)



Punch Forceps (Straight)

| 4 | Length xWidth | Bite Width | Product Code |
|---|---------------|------------|--------------|
|   | 65x2.5mm      | 1.3mm      | 1300611015   |



Drainage Tube

| 5 | Size             | Product Code |
|---|------------------|--------------|
|   | 2.5mmx2.0mmx45mm | 1300062907   |



Punch Forceps (Straight)

| 6 | Length xWidth | Bite Width | Product Code |
|---|---------------|------------|--------------|
|   | 100x3.4mm     | 2.2mm      | 1300607015   |



Probe

| 7 | Length | Hook Deep | Product Code |
|---|--------|-----------|--------------|
|   | 140mm  | 2mm       | 1300661012   |



| 8 | Product Name         | Product Code |
|---|----------------------|--------------|
|   | Basic Instrument Set | 1360811018   |

# • Arthroscopy General Instrument



Punch Forceps (Straight)



| Length ×Width | Bite Width | Product Code |
|---------------|------------|--------------|
| 65 ×2.5mm     | 1.3mm      | 1300611015   |
| 100 ×3.4mm    | 2.2mm      | 1300607015   |
| 100 ×4.2mm    | 2.6mm      | 1300607016   |

Punch Forceps (Curved Left)



| Length ×Width | Bite Width | Product Code |
|---------------|------------|--------------|
| 65 ×2.5mm     | 1.3mm      | 1300611021   |
| 100 ×3.4mm    | 2.2mm      | 1300607017   |

Punch Forceps (Curved Right)



| Length ×Width | Bite Width | Product Code |
|---------------|------------|--------------|
| 65 ×2.5mm     | 1.3mm      | 1300611020   |
| 100 ×3.4mm    | 2.2mm      | 1300607018   |

Punch Forceps (Upturned)



| Length ×Width | Product Code |
|---------------|--------------|
| 65 ×2.5mm     | 1300611024   |



Grasper Forceps (Crocodile Teeth)



| Length ×Width | Product Code |
|---------------|--------------|
| 65 ×2.5mm     | 1300611019   |
| 215 ×3.5mm    | 1300609040   |



Probe

| Length | Hook Deep | Product Code |
|--------|-----------|--------------|
| 140mm  | 2.0mm     | 1300661012   |
| 140mm  | 4.0mm     | 1360803002   |
| 230mm  | 3.0mm     | 1360803002   |
| 230mm  | 5.0mm     | 1360803003   |



Meniscal Hook Knife

| Length ×Width | Reverse | Product Code |
|---------------|---------|--------------|
| 140 ×2.5mm    | 90°     | 1300062901   |
| 140 ×3.5mm    | 90°     | 1300062909   |

Bone Awl



| Length | Angle | Product Code |
|--------|-------|--------------|
| 240mm  | 20°   | 1306020191   |

Osteotome



| Length ×Width | Product Code |
|---------------|--------------|
| 140 ×2.0mm    | 1306110081   |
| 140 ×4.0mm    | 1306110084   |



Meniscal Push Knife

| Length ×Width | Product Code |
|---------------|--------------|
| 140 ×2.5mm    | 1300062902   |
| 140 ×3.5mm    | 1300062910   |

# • Arthroscopy General Instrument



Small Curette

| Length ×Width | Product Code |
|---------------|--------------|
| 230 ×3.0mm    | 1360803011   |



Ventura Stifle Thrust Lever

| Size | Product Code |
|------|--------------|
| L    | 1300062903   |



Obturator

| Size  | Product Code |
|-------|--------------|
| 1.9mm | 1300062904   |
| 2.4mm | 1300062905   |
| 2.7mm | 1300062906   |



Drainage Tube

| Size             | Product Code |
|------------------|--------------|
| 2.5mm×2.0mm×45mm | 1300062907   |



Probe

| Size     | Product Code |
|----------|--------------|
| φ0.8×2MM | 1300661012   |



| Product Name                      | Product Code |
|-----------------------------------|--------------|
| Specialized drape for arthroscopy | 03.18.300003 |

Leader of small animal orthopedic instruments



**BLUESAO Co.,Ltd**

Address : No.228 Mingchuan Road, High-tech Zone, Hefei city, Anhui Province, China

Tel:+86 152 0551 2890 +86 188 5602 1256

E-mail:[amyxu@bluesao.com](mailto:amyxu@bluesao.com) [oasis@bluesao.com](mailto:oasis@bluesao.com)

Website:[www.bluesao.com](http://www.bluesao.com)

